

ARCHITECTURAL DRAWINGS

2in1 - 3BEDROOM STAFF HOUSE

ARCHITECTURAL DRAWING

(1000 WARD SCHOOLS)

JUNE, 2023

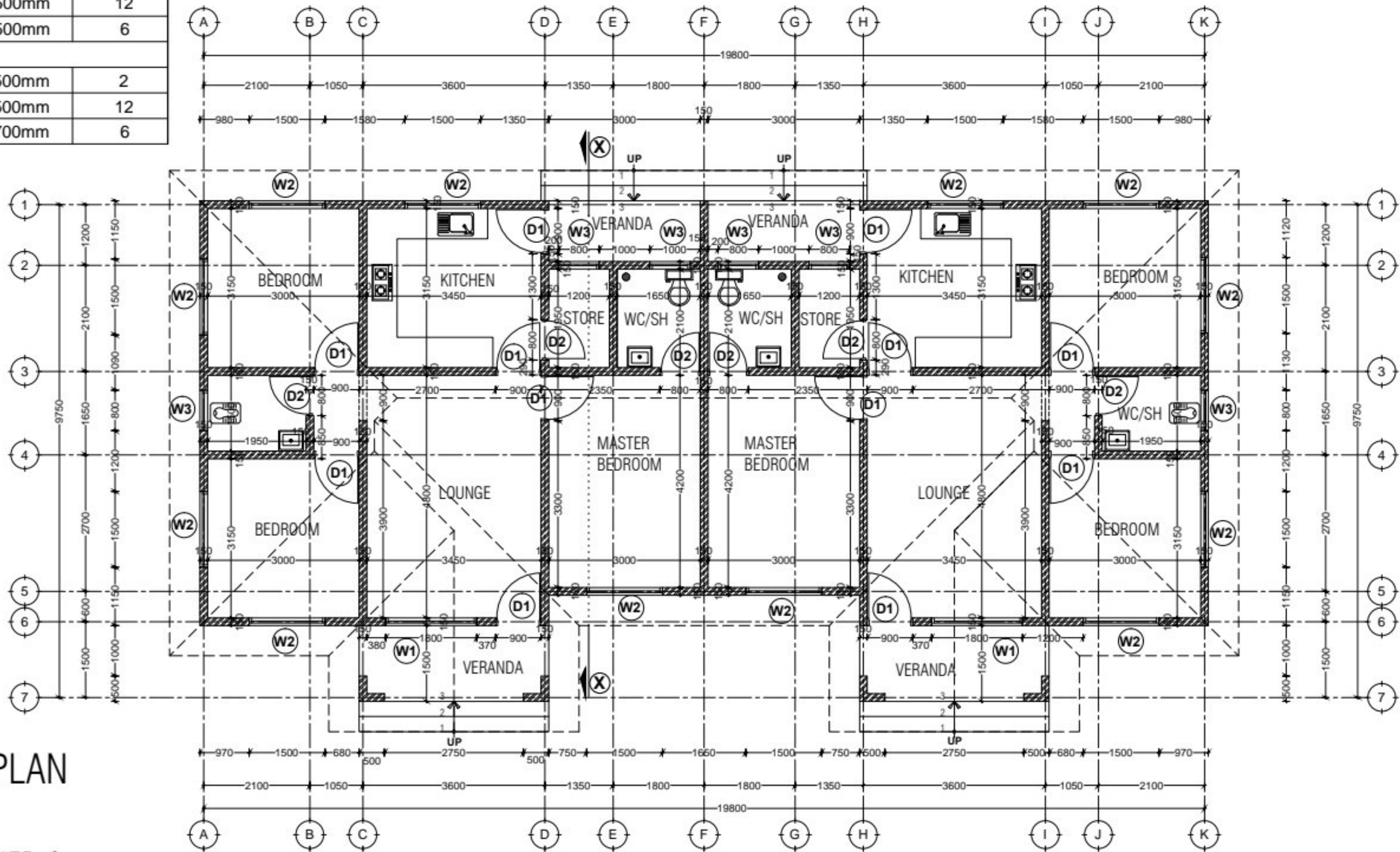
MINISTRY OF EDUCATION, SCIENCE AND TECHNOLOGY
IN COLLABORATION WITH
PRESIDENT'S OFFICE REGIONAL ADMINISTRATION AND
LOCAL GOVERNMENT

PROVISION OF PHYSICAL FACILITIES IN SECONDARY SCHOOLS
FOR
SECONDARY EDUCATION QUALITY IMPROVEMENT PROGRAM (SEQUIP)
(1000 WARD SCHOOLS)

DRAWING TITLE **2in1 - 3BEDROOM STAFF HOUSE**
DRAWING NO. **SQP/ARC/STF - 00**

DRAWN BY J.R
CHECKED BY L.S
SCALE 1:100
JUNE,2023

DOOR & WINDOW SCHEDULE			
NO.	WIDTH	HEIGHT	TOTAL
D1	900mm	2500mm	12
D2	800mm	2500mm	6
W1	1800mm	1500mm	2
W2	1500mm	1500mm	12
W3	800mm	700mm	6



GROUND PLAN

SCALE: 1:100

TOTAL AREA = 175m²

MINISTRY OF EDUCATION, SCIENCE AND TECHNOLOGY

IN COLLABORATION WITH

PRESIDENT'S OFFICE REGIONAL ADMINISTRATION AND LOCAL GOVERNMENT

PROVISION OF PHYSICAL FACILITIES IN SECONDARY SCHOOLS

FOR

SECONDARY EDUCATION QUALITY IMPROVEMENT PROGRAM (SEQIP)

DRAWING TITLE: 2in1 - 3BEDROOM STAFF HOUSE

FLOOR PLAN

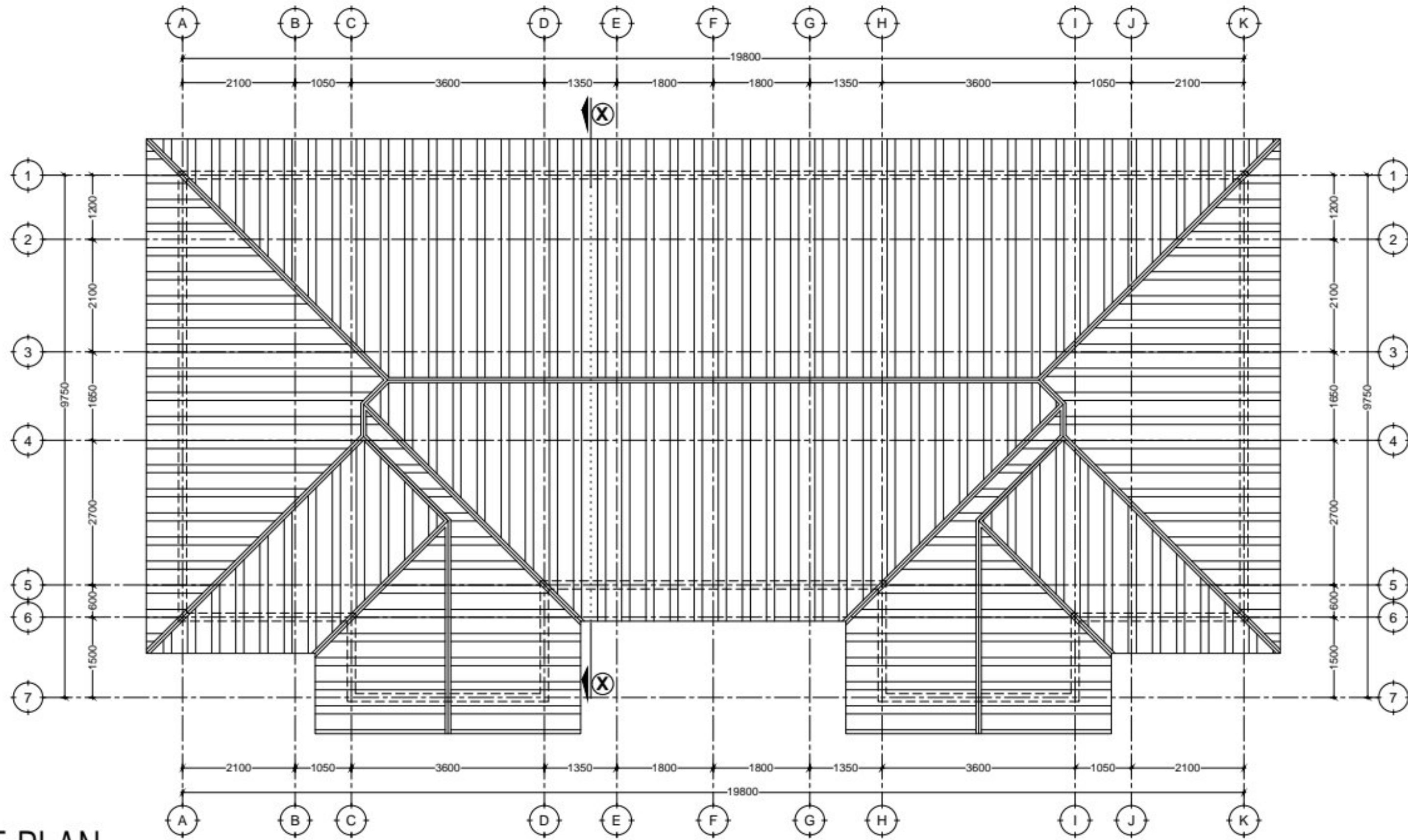
DRAWING NO: SQP/ARC/STF - 1/04

DRAWN BY J.R

CHECKED BY I.S

SCALE 1;100

JUNE,2023



ROOF PLAN

SCALE: 1:100

MINISTRY OF EDUCATION, SCIENCE AND TECHNOLOGY

IN COLLABORATION WITH

PRESIDENT'S OFFICE REGIONAL ADMINISTRATION AND LOCAL GOVERNMENT

PROVISION OF PHYSICAL FACILITIES IN SECONDARY SCHOOLS

FOR

SECONDARY EDUCATION QUALITY IMPROVEMENT PROGRAM (SEQIP)

DRAWING TITLE: 2in1 - 3BEDROOM STAFF HOUSE

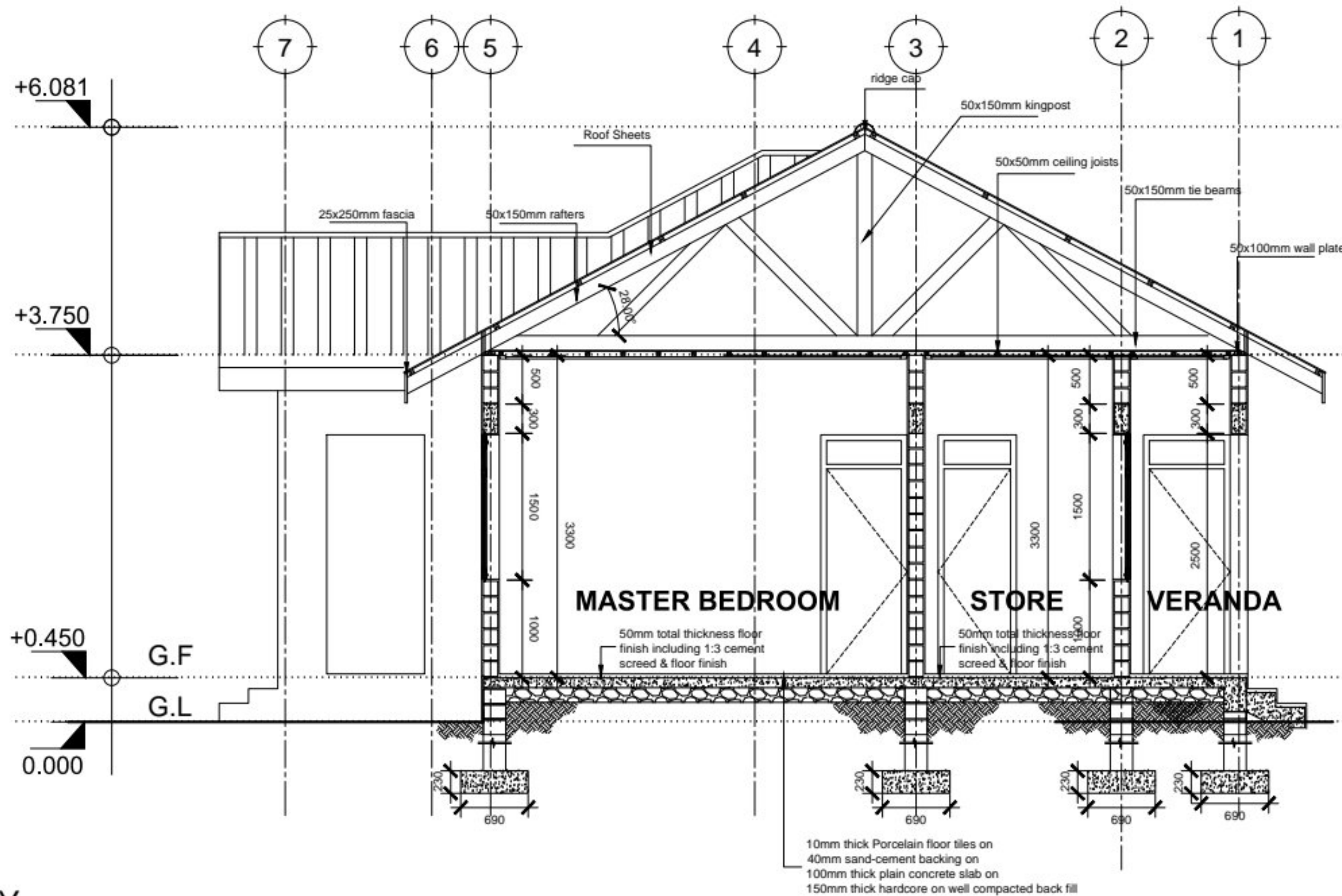
ROOF PLAN

DRAWING NO: SQP/ARC/STF - 2/04

DRAWN BY J.R
CHECKED BY I.S

SCALE 1;100

JUNE,2023



SECTION X:X

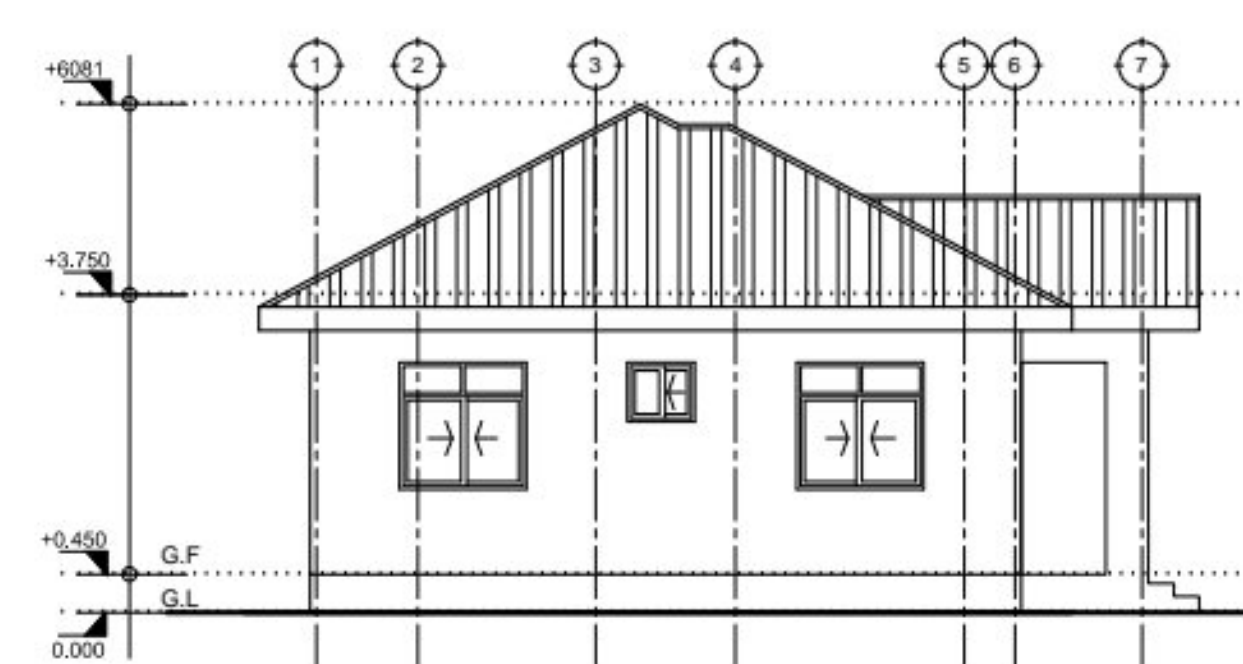
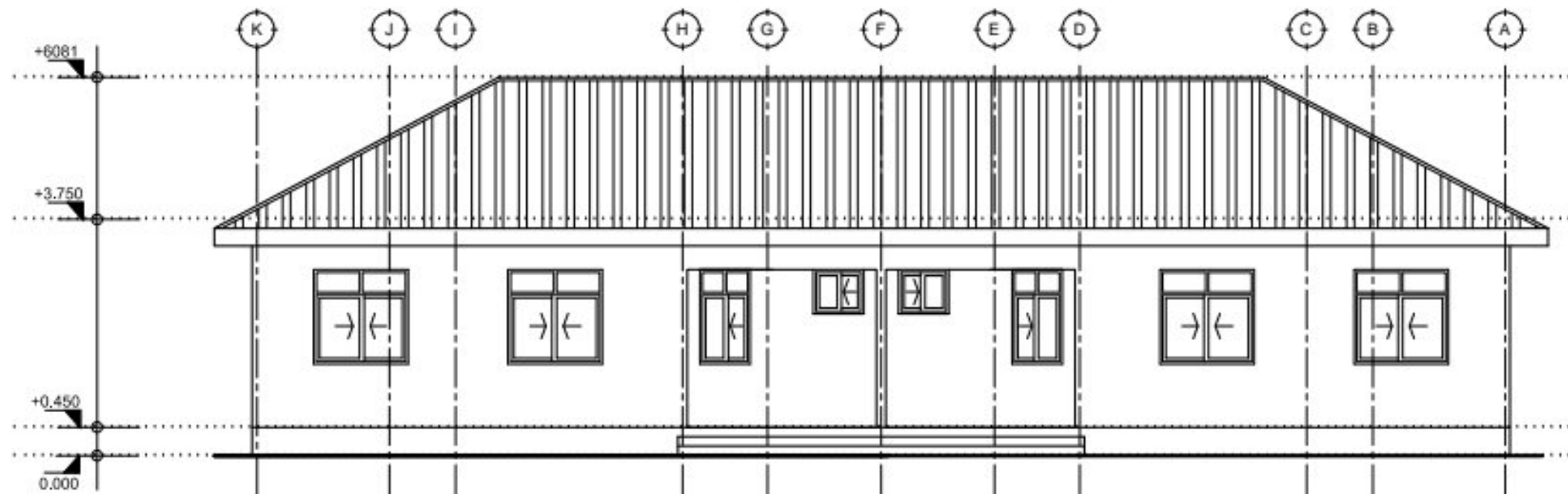
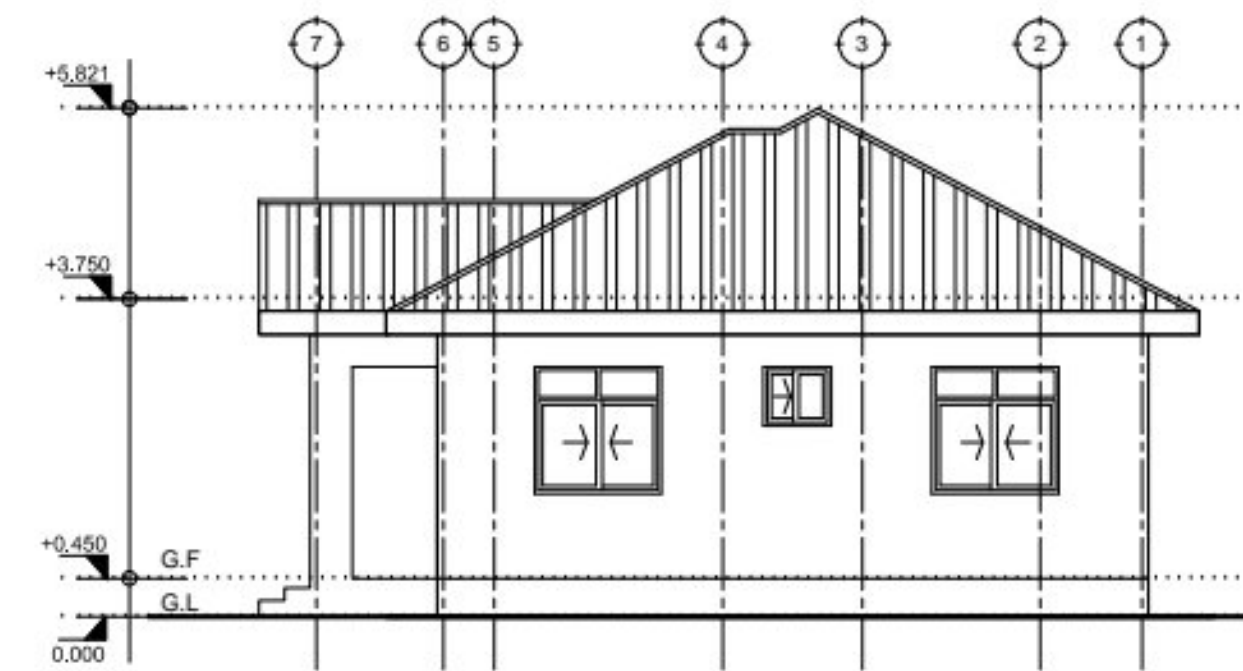
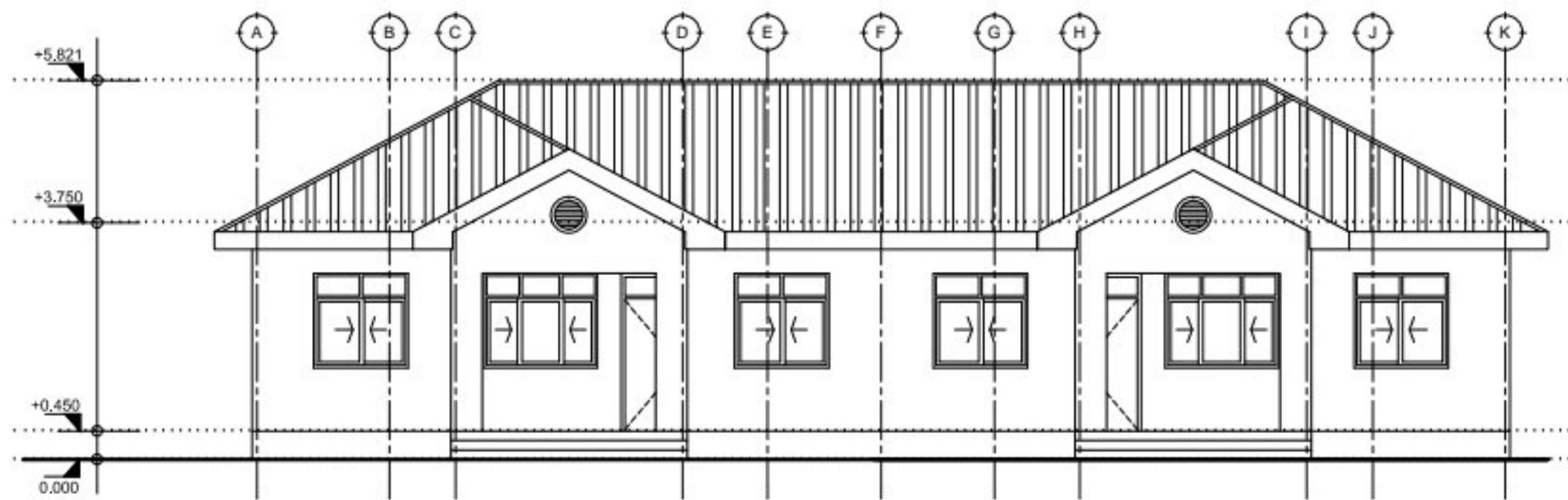
SCALE: 1:50

MINISTRY OF EDUCATION, SCIENCE AND TECHNOLOGY
 IN COLLABORATION WITH
 PRESIDENT'S OFFICE REGIONAL ADMINISTRATION AND
 LOCAL GOVERNMENT

PROVISION OF PHYSICAL FACILITIES IN SECONDARY SCHOOLS
 FOR
 SECONDARY EDUCATION QUALITY IMPROVEMENT PROGRAM (SEQIP)

DRAWING TITLE: 2in1 - 3BEDROOM STAFF HOUSE
 SECTION
 DRAWING NO: SQP/ARC/STF - 3/04

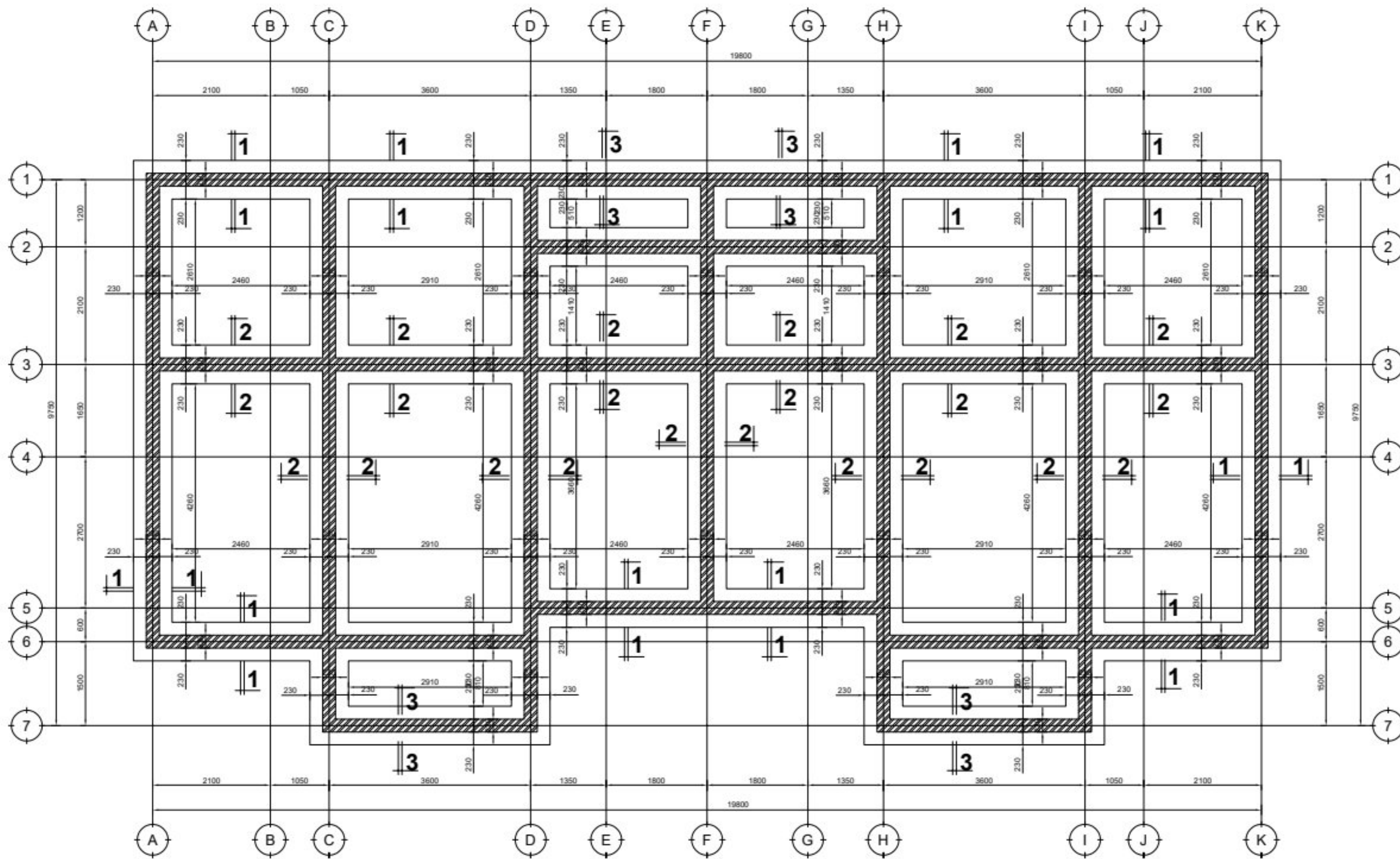
DRAWN BY J.R
 CHECKED BY I.S
 SCALE 1;100
 JUNE,2023



ELEVATIONS
SCALE: 1:100

<p>MINISTRY OF EDUCATION, SCIENCE AND TECHNOLOGY <i>IN COLLABORATION WITH</i> PRESIDENT'S OFFICE REGIONAL ADMINISTRATION AND LOCAL GOVERNMENT</p>	<p>PROVISION OF PHYSICAL FACILITIES IN SECONDARY SCHOOLS FOR SECONDARY EDUCATION QUALITY IMPROVEMENT PROGRAM (SEQIP)</p>	<p>DRAWING TITLE: 2in1 - 3BEDROOM STAFF HOUSE ELEVATIONS DRAWING NO: SQP/ARC/STF - 4/04</p>	<p>DRAWN BY J.R CHECKED BY I.S SCALE 1;100 JUNE,2023</p>
---	--	---	--

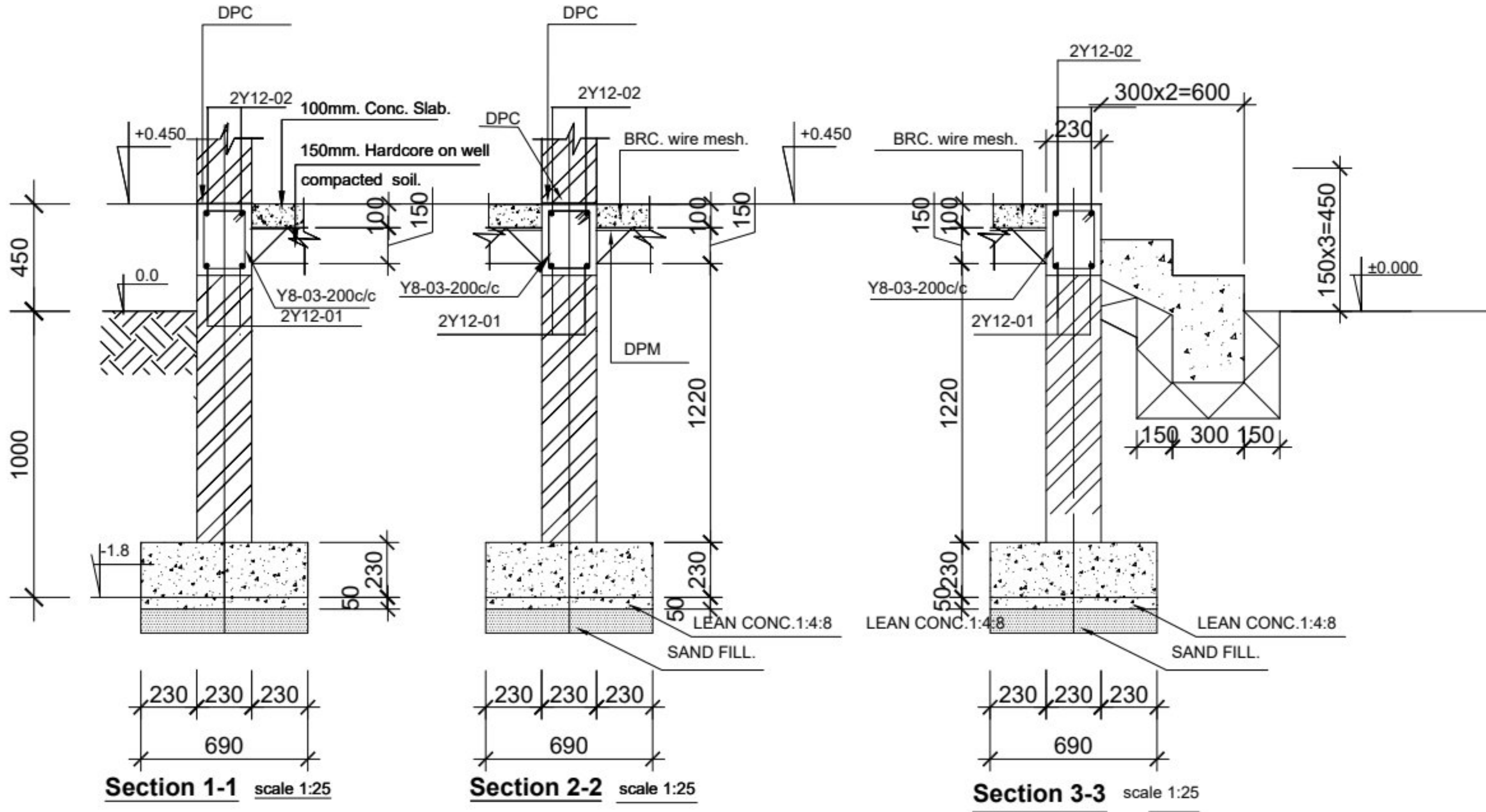
STRUCTURAL DRAWINGS



- NOTE:**
1. All dimensions are in mm unless otherwise specified
 2. All discrepancies shall be referred to the structural engineer
 3. Reinforced concrete shall be of grade 20 with $f_{cu}=20N/mm^2$ at 28 days of age
 4. Main reinforcements shall be high tensile steel with $f_y = 460N/mm^2$
 5. Nominal cover to the reinforcements:
 - a) Foundation 50mm
 - b) Column 25mm
 - c) Beam 25mm
 - d) Slab 25mm

FOUNDATION LAYOUT PLAN

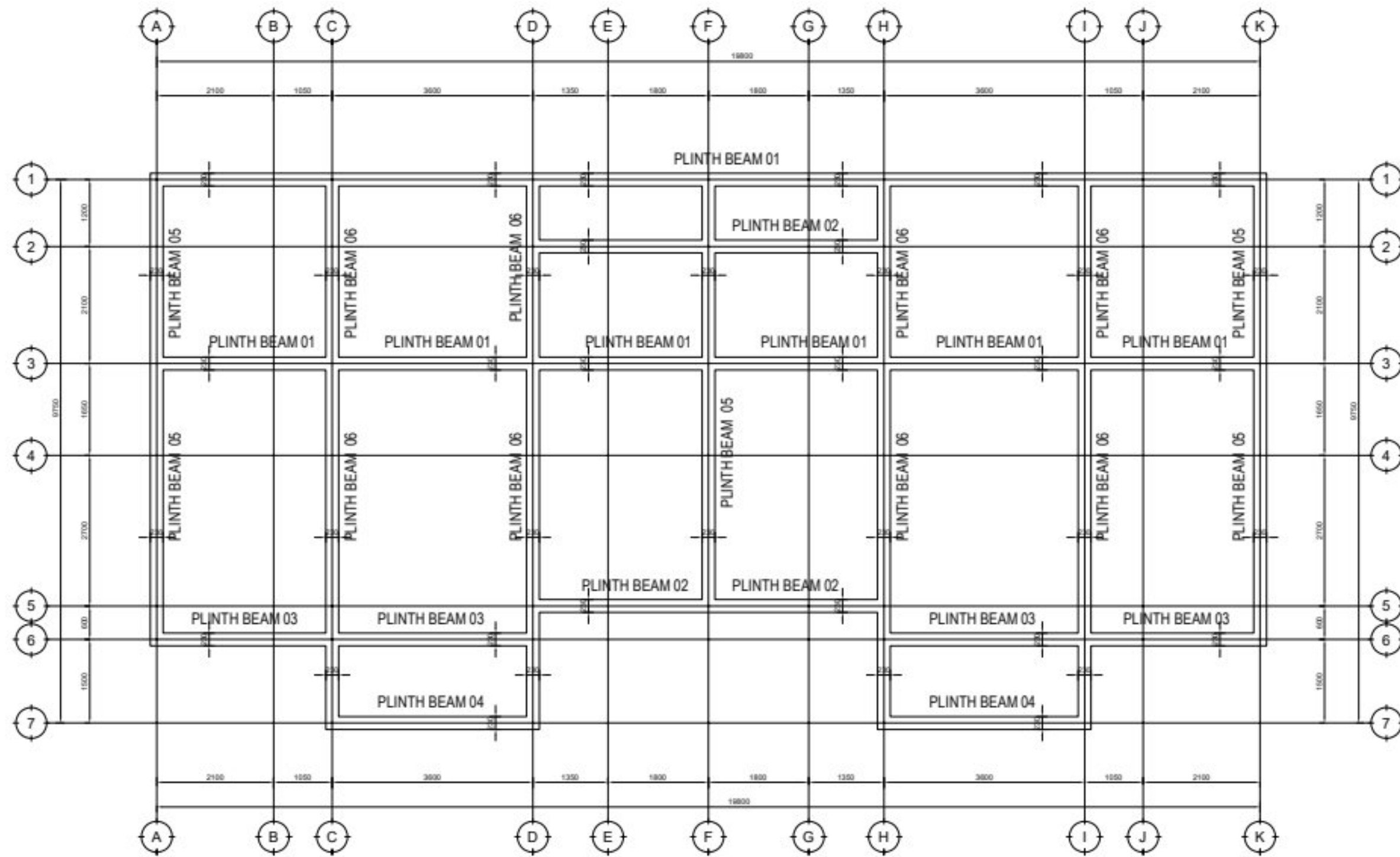
MINISTRY OF EDUCATION, SCIENCE AND TECHNOLOGY IN COLLABORATION WITH PRESIDENTS OFFICE REGIONAL ADMINISTRATION AND LOCAL GOVERNMENT	SECONDARY EDUCATION QUALITY IMPROVEMENT PROGRAM (SEQUIP)	3BEDROOMS SEMIDETACHED HOUSE (2 IN 1)	DRAWN BY A.M.A. CHECKED BY B.N	
		FOUNDATION LAYOUT	STAFFH2IN1/STR/01	SCALE 1:100



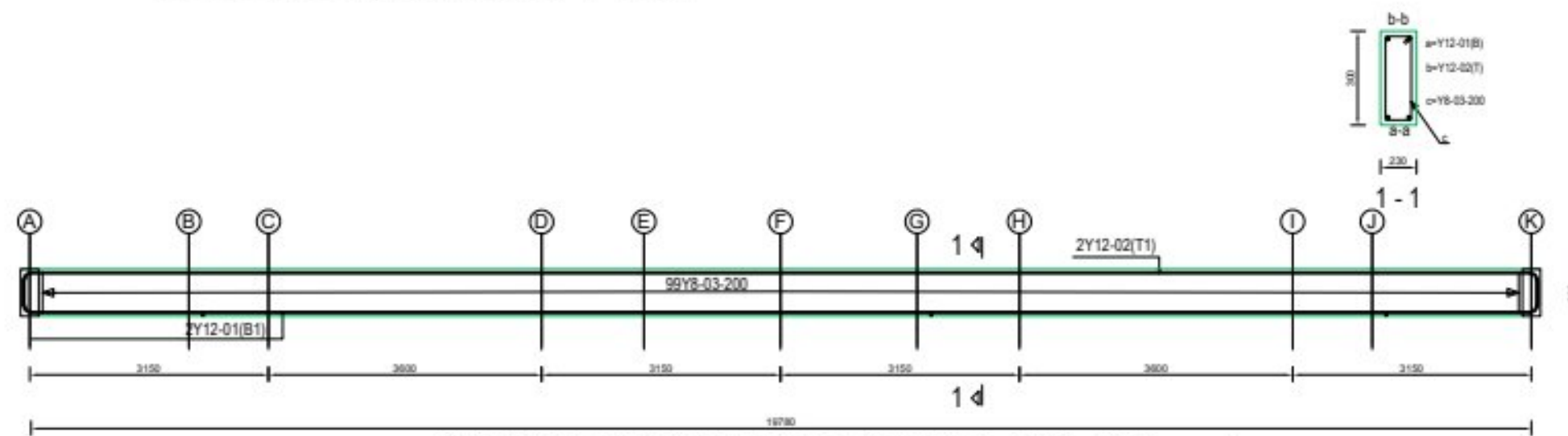
- NOTE:**
1. All dimensions are in mm unless otherwise specified
 2. All discrepancies shall be referred to the structural engineer
 3. Reinforced concrete shall be of grade 20 with $f_{cu}=20N/mm^2$ at 28 days of age
 4. Main reinforcements shall be high tensile steel with $f_y = 460N/mm^2$
 5. Nominal cover to the reinforcements:
 - a) Foundation 50mm
 - b) Column 25mm
 - c) Beam 25mm
 - d) Slab 25mm

Foundation Details

MINISTRY OF EDUCATION, SCIENCE AND TECHNOLOGY IN COLLABORATION WITH PRESIDENTS OFFICE REGIONAL ADMINISTRATION AND LOCAL GOVERNMENT	SECONDARY EDUCATION QUALITY IMPROVEMENT PROGRAM(SEQUIP)	3BEDROOMS SEMIDETACHED HOUSE (2 IN 1)	DRAWN BY A.M.A. CHECKED BY B.N
		DRAWING TITLE FOUNDATION DETAILS	DRAWING NO. STAFFH2IN1/STR/02



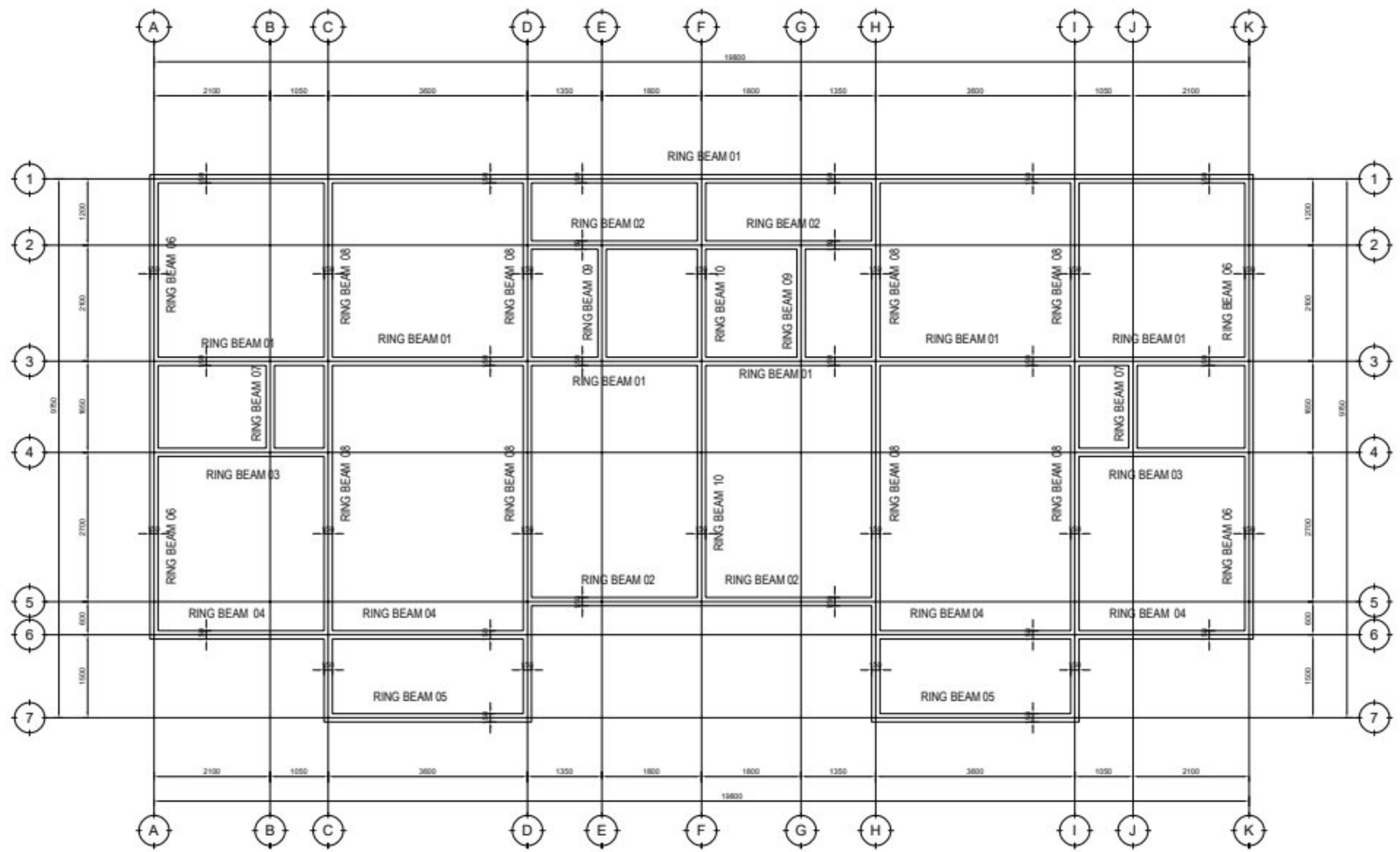
PLINTH BEAMS LAYOUT PLAN



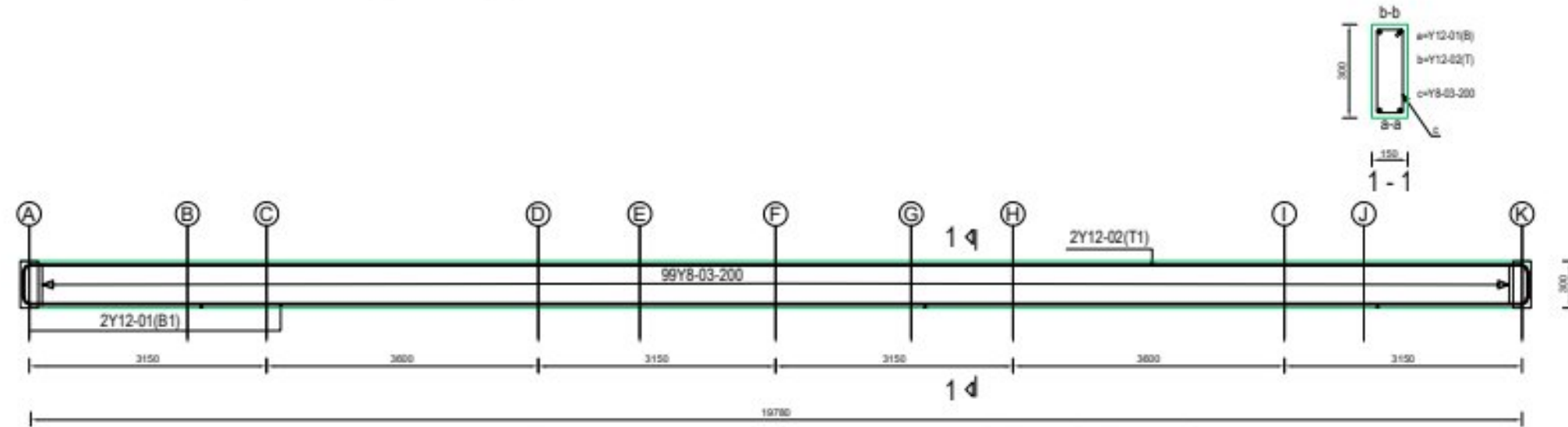
TYPICAL PLINTH BEAM DETAILS (300x230 mm)

- NOTE:**
1. All dimensions are in mm unless otherwise specified
 2. All discrepancies shall be referred to the structural engineer
 3. Reinforced concrete shall be of grade 20 with $f_{cu}=20N/mm^2$ at 28 days of age
 4. Main reinforcements shall be high tensile steel with $f_y = 460N/mm^2$
 5. Nominal cover to the reinforcements:
 - a) Foundation 50mm
 - b) Column 25mm
 - c) Beam 25mm
 - d) Slab 25mm

MINISTRY OF EDUCATION, SCIENCE AND TECHNOLOGY IN COLLABORATION WITH PRESIDENTS OFFICE REGIONAL ADMINISTRATION AND LOCAL GOVERNMENT	SECONDARY EDUCATION QUALITY IMPROVEMENT PROGRAM(SEQUIP)	3BEDROOMS SEMIDETACHED HOUSE (2 IN 1)	
		DRAWING TITLE PLINTH BEAMS	DRAWN BY A.M.A. CHECKED BY B.N
DRAWING NO. STAFFH2IN1/STR/03		SCALE 1:100	DATE: JUNE. 2023



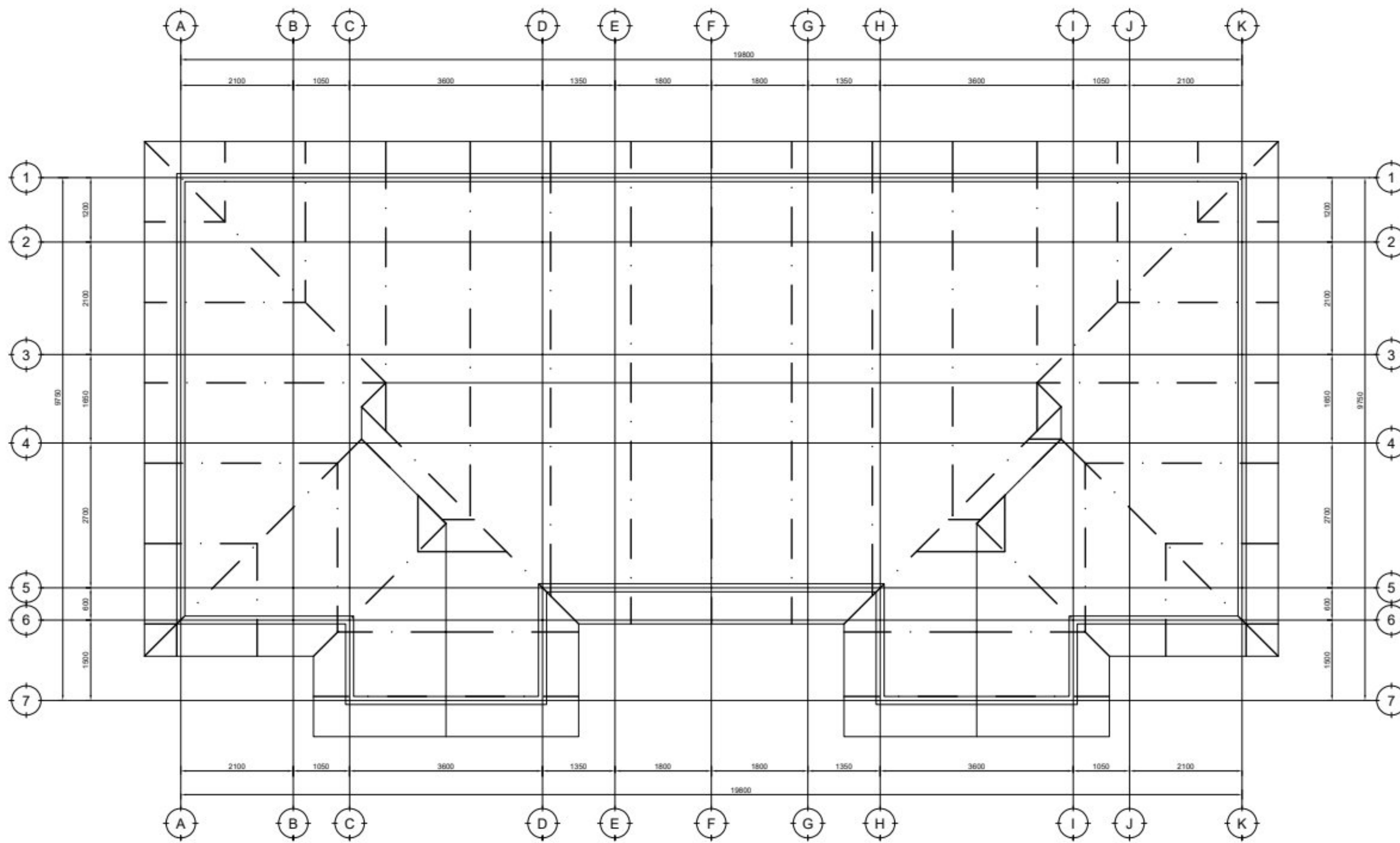
RING BEAMS LAYOUT PLAN



TYPICAL RING BEAM DETAILS (300x150 mm)

- NOTE:**
1. All dimensions are in mm unless otherwise specified
 2. All discrepancies shall be referred to the structural engineer
 3. Reinforced concrete shall be of grade 20 with $f_{cu}=20N/mm^2$ at 28 days of age
 4. Main reinforcements shall be high tensile steel with $f_y = 460N/mm^2$
 5. Nominal cover to the reinforcements:
 - a) Foundation 50mm
 - b) Column 25mm
 - c) Beam 25mm
 - d) Slab 25mm

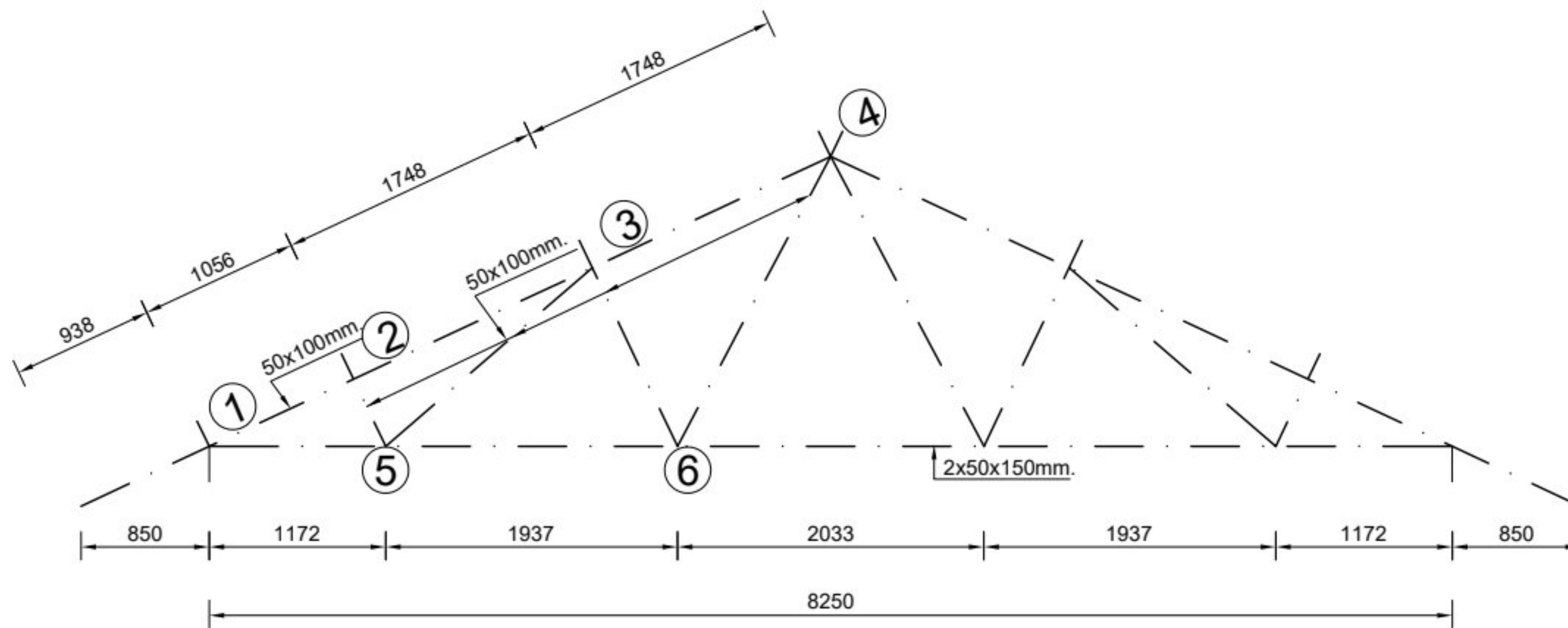
MINISTRY OF EDUCATION, SCIENCE AND TECHNOLOGY IN COLLABORATION WITH PRESIDENTS OFFICE REGIONAL ADMINISTRATION AND LOCAL GOVERNMENT	SECONDARY EDUCATION QUALITY IMPROVEMENT PROGRAM(SEQUIP)	3BEDROOMS SEMIDETACHED HOUSE (2 IN 1)	
		DRAWING TITLE RING BEAMS	DRAWN BY A.M.A. CHECKED BY B.N
DRAWING NO. STAFFH2IN1/STR/04		SCALE 1:100	DATE: JUNE, 2023



- NOTE:**
1. All dimensions are in mm unless otherwise specified
 2. All discrepancies shall be referred to the structural engineer
 3. Reinforced concrete shall be of grade 20 with $f_{cu}=20N/mm^2$ at 28 days of age
 4. Main reinforcements shall be high tensile steel with $f_y = 460N/mm^2$
 5. Nominal cover to the reinforcements:
 - a) Foundation 50mm
 - b) Column 25mm
 - c) Beam 25mm
 - d) Slab 25mm

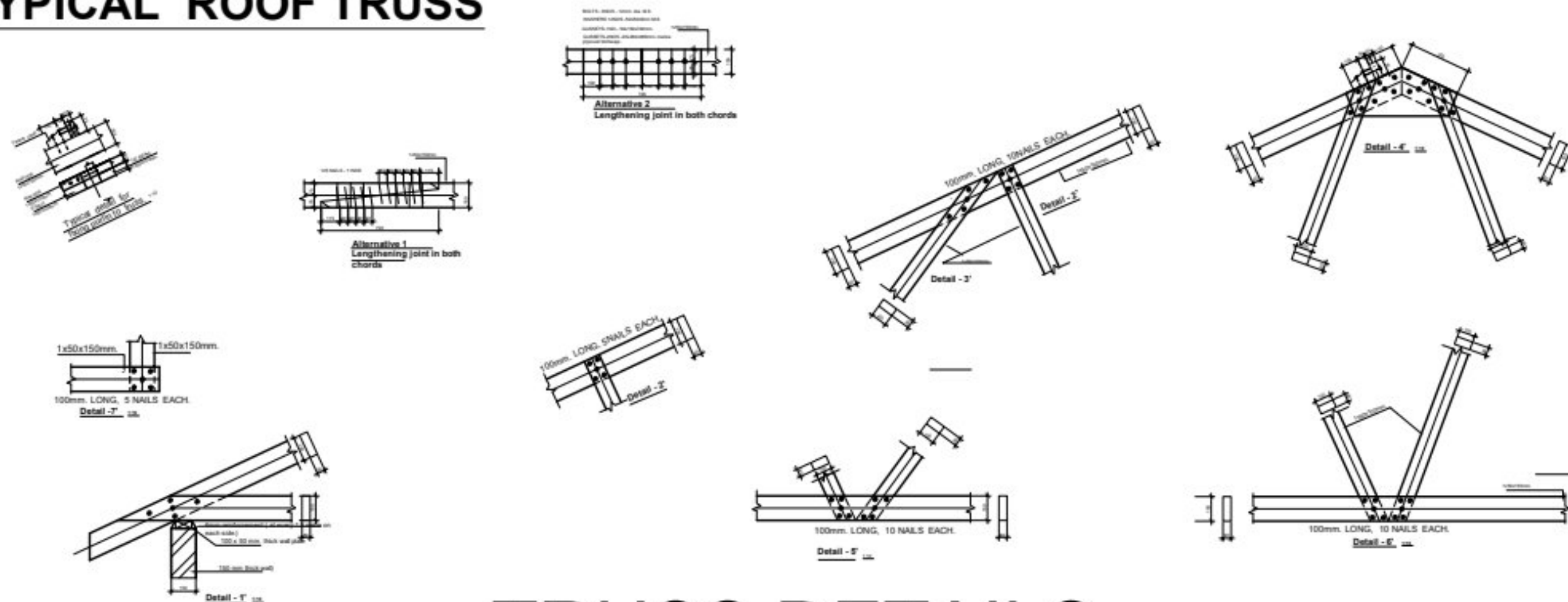
ROOF TRUSS LAYOUT PLAN

MINISTRY OF EDUCATION, SCIENCE AND TECHNOLOGY IN COLLABORATION WITH PRESIDENTS OFFICE REGIONAL ADMINISTRATION AND LOCAL GOVERNMENT	SECONDARY EDUCATION QUALITY IMPROVEMENT PROGRAM(SEQUIP)	3BEDROOMS SEMIDETACHED HOUSE (2 IN 1)	
		DRAWING TITLE ROOF TRUSS LAYOUT PLAN	DRAWN BY A.M.A. CHECKED BY B.N
		DRAWING NO. STAFFH2IN1/STR/05	SCALE 1:100 DATE: JUNE, 2023



- NOTE:**
1. All dimensions are in mm unless otherwise specified
 2. All discrepancies shall be referred to the structural engineer
 3. Reinforced concrete shall be of grade 20 with $f_{cu}=20N/mm^2$ at 28 days of age
 4. Main reinforcements shall be high tensile steel with $f_y = 460N/mm^2$
 5. Nominal cover to the reinforcements:
 - a) Foundation 50mm
 - b) Column 25mm
 - c) Beam 25mm
 - d) Slab 25mm

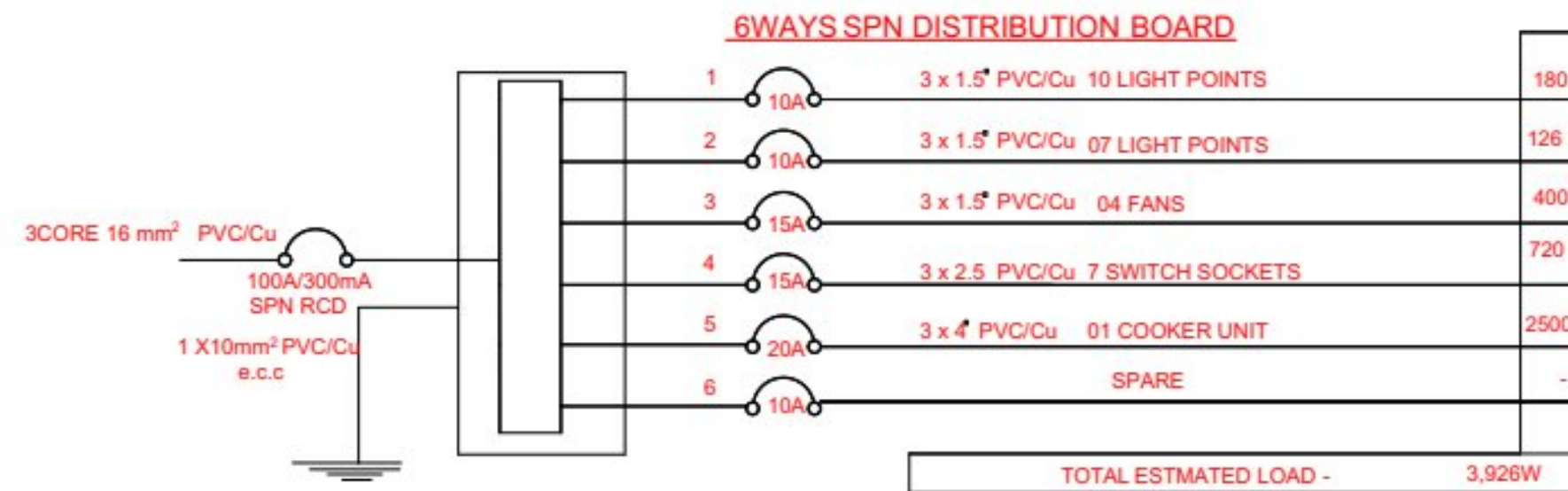
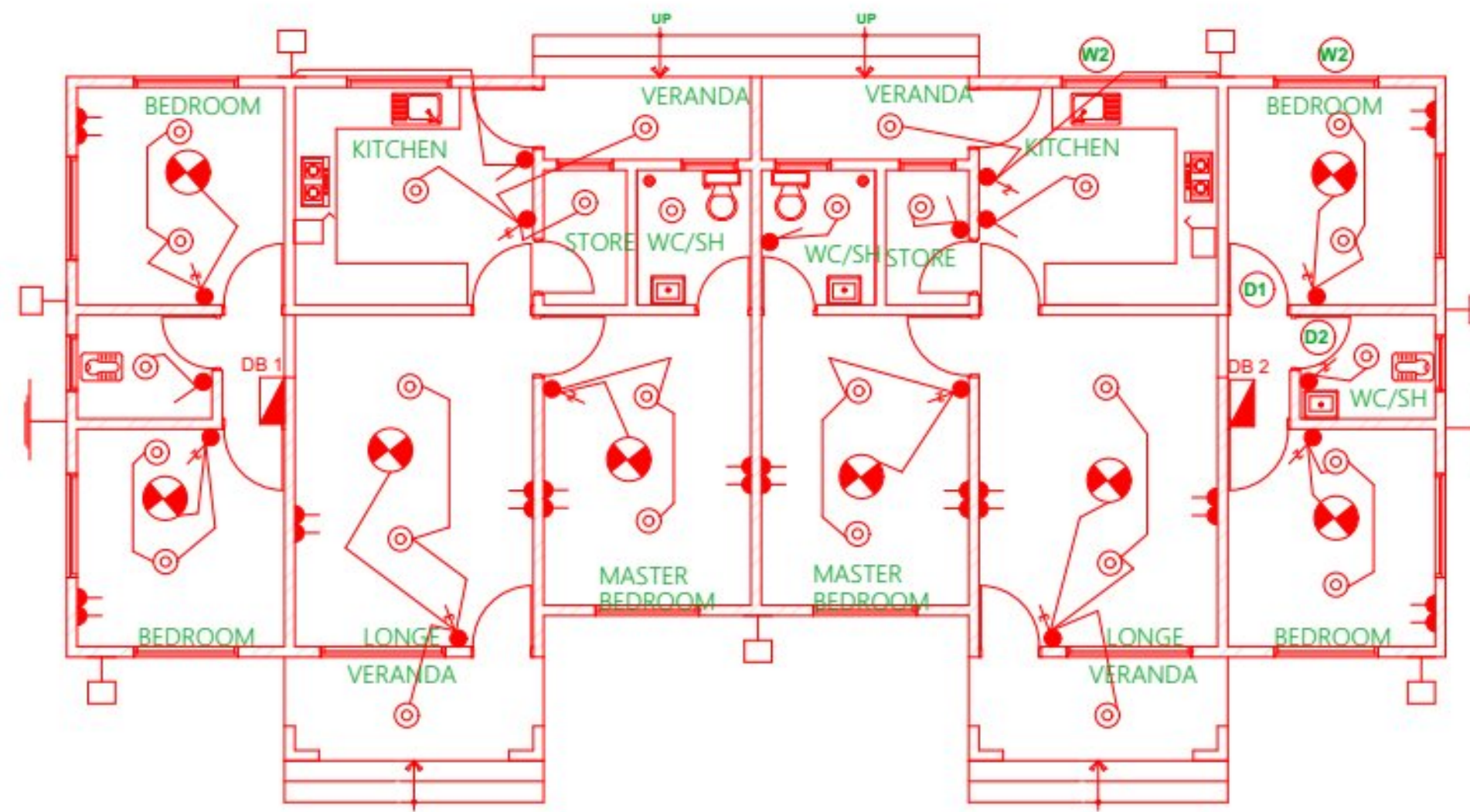
TYPICAL ROOF TRUSS



TRUSS DETAILS

MINISTRY OF EDUCATION, SCIENCE AND TECHNOLOGY IN COLLABORATION WITH PRESIDENTS OFFICE REGIONAL ADMINISTRATION AND LOCAL GOVERNMENT	SECONDARY EDUCATION QUALITY IMPROVEMENT PROGRAM(SEQUIP)	3BEDROOMS SEMIDETACHED HOUSE (2 IN 1)		DRAWN BY A.M.A. CHECKED BY B.N
		DRAWING TITLE ROOF TRUSS DETAILS		
DRAWING NO. STAFFH2IN1/STR/06		SCALE 1:100	DATE: JUNE, 2023	

ELECTRICAL DRAWINGS

















MINISTRY OF EDUCATION, SCIENCE AND TECHNOLOGY
 IN COLLABORATION WITH
 PRESIDENT'S OFFICE REGIONAL ADMINISTRATION AND
 LOCAL GOVERNMENT

PROVISION OF PHYSICAL FACILITIES IN SECONDARY SCHOOLS
 FOR
 SECONDARY EDUCATION QUALITY IMPROVEMENT PROGRAM
 PROPOSED 3 BEDROOM SEMI DETACHED HOUSE

DRAWING TITLE:
FLOOR PLAN - LIGHTING&POWER LAYOUT
 DRAWING NO: ELECT/3BED/01

Date	Jun 2023
Drawn by	EEC
Checked by	EEC
Scale	To fit

KEY TO SYMBOLS

SYMBOL	DESCRIPTION	MOUNTING HEIGHT
	Distribution Board with integral RCD	2000 mm AFFL
	Bulkhead light Fitting	Wall Mounted
	4FT Single LED TUBE Light	On Ceiling
	Ceiling Fan	On Ceiling
	Fan Regulator	1500 mm AFFL
	1 gang 1way Switch	1500 mm AFFL
	1 gang 2way Switch	1500 mm AFFL
	2 gang 2way Switch	1500 mm AFFL
	3 gang 1way Switch	
	2 gang 1way Switch	1500 mm AFFL
	4 gang 1way Switch	1500 mm AFFL
	Twin Switch Socket	450 mm AFFL
	Ceiling light complete with energy saver/LED 11w	on ceiling level
	Earth point	

MINISTRY OF EDUCATION, SCIENCE AND TECHNOLOGY IN
COLLABORATION WITH
PRESIDENT'S OFFICE REGIONAL ADMINISTRATION AND LOCAL
GOVERNMENT

PROVISION OF PHYSICAL FACILITIES IN SECONDARY SCHOOLS
FOR
SECONDARY EDUCATION QUALITY IMPROVEMENT PROGRAM
PROPOSED 3 BEDROOM SEMI DETACHED HOUSE

DRAWING TITLE:

LEGEND

DRAWING NO: ELECT/3BED/02

DATE: Jun 2023

DRAWN BY EEC

CHECKED BY EEC

SCALE: NTS