

MINISTRY OF EDUCATION, SCIENCE AND TECHNOLOGY
 IN COLLABORATION WITH
 PRESIDENT'S OFFICE REGIONAL ADMINISTRATION AND
 LOCAL GOVERNMENT

PROVISION OF PHYSICAL FACILITIES IN SECONDARY SCHOOLS
 FOR
 SECONDARY EDUCATION QUALITY IMPROVEMENT PROGRAM (SEQIP)

DRAWING TITLE **3 BEDROOM STAFF HOUSE
 FLOOR PLAN**
 DRAWING NO. **SQP/ARC/3BR/01**

DRAWN BY I.S.
 CHECKED BY JR, RM, AL
 SCALE TO FIT
 MAY, 2021



REAR ELEVATION



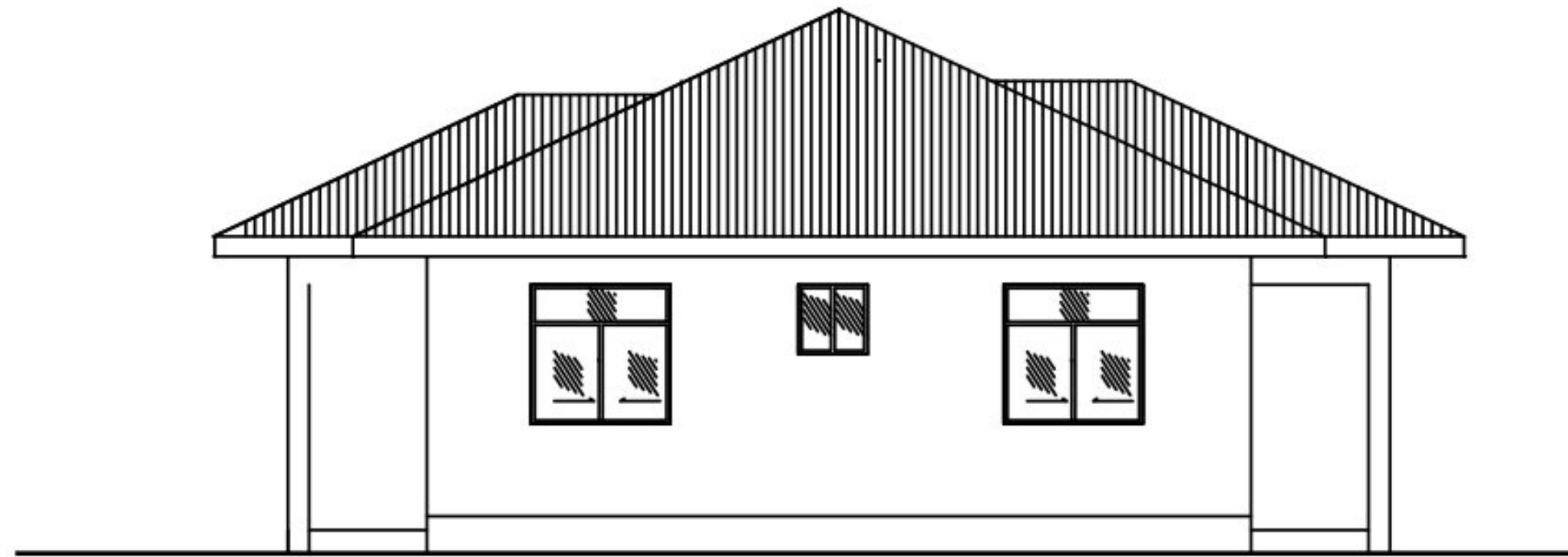
FRONT ELEVATION

MINISTRY OF EDUCATION, SCIENCE AND TECHNOLOGY
IN COLLABORATION WITH
 PRESIDENT'S OFFICE REGIONAL ADMINISTRATION AND
 LOCAL GOVERNMENT

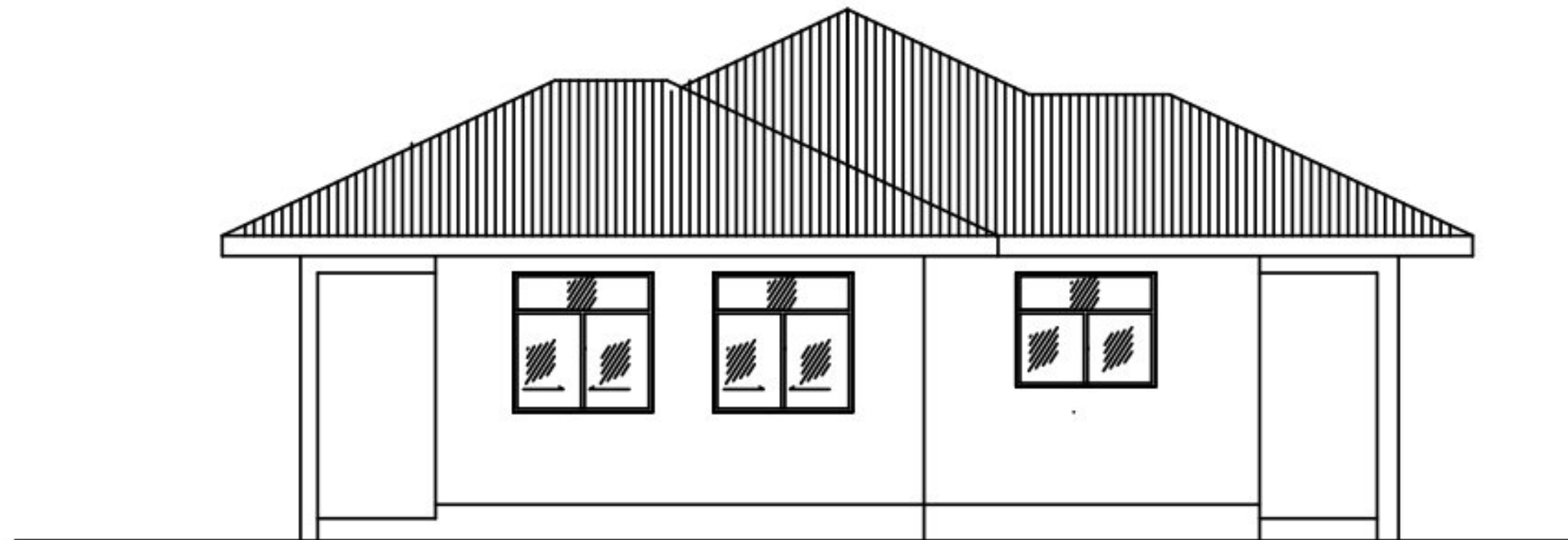
PROVISION OF PHYSICAL FACILITIES IN SECONDARY SCHOOLS
 FOR
 SECONDARY EDUCATION QUALITY IMPROVEMENT PROGRAM (SEQIP)

DRAWING TITLE **3 BEDROOM STAFF HOUSE**
 FRONT AND REAR ELEVATIONS
 DRAWING NO. **SQP/ARC/3BR/04**

DRAWN BY LS
 CHECKED BY JR, RM, AL
 SCALE TO FIT
 MAY, 2021



SIDE ELEVATION



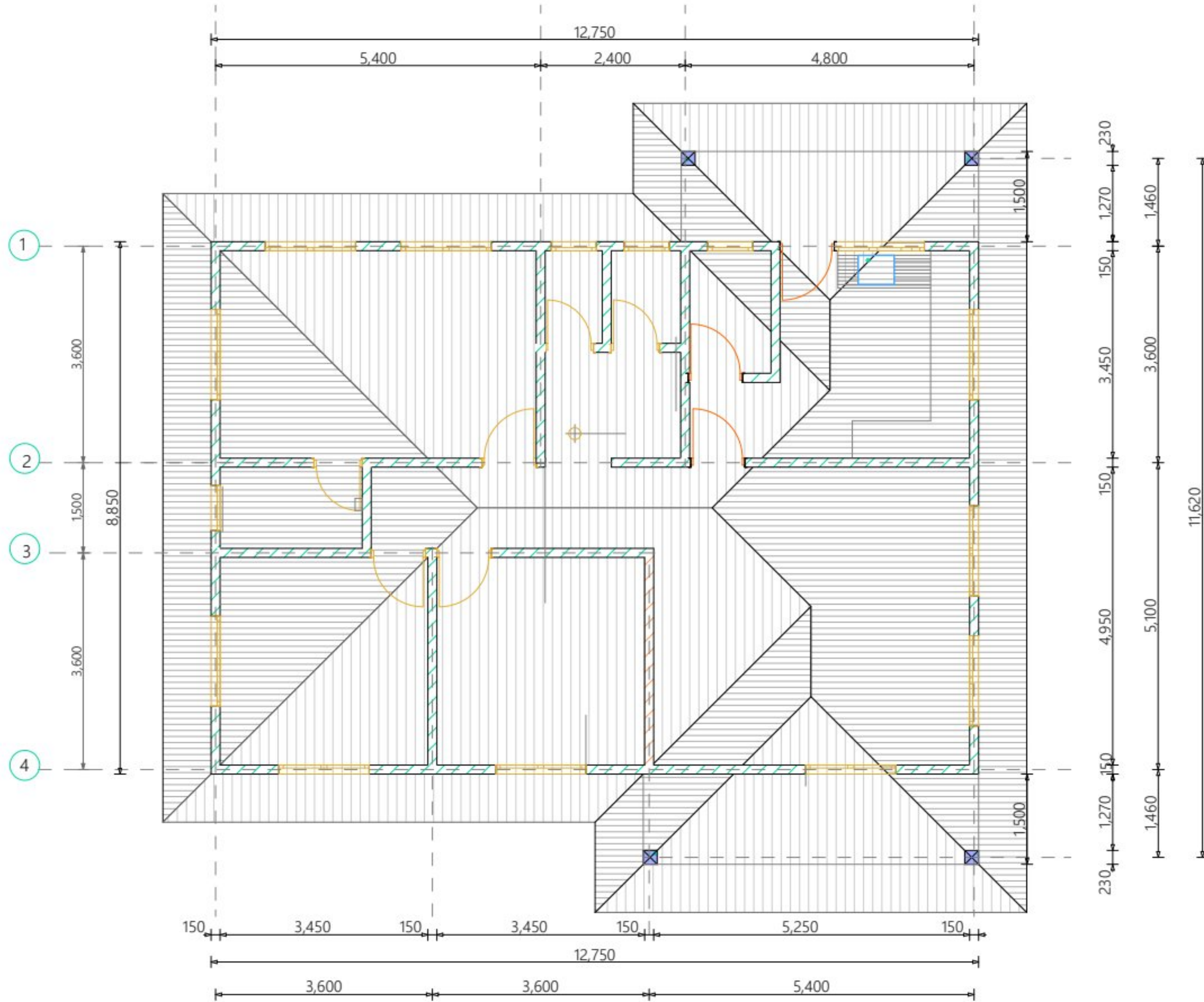
SIDE ELEVATION

MINISTRY OF EDUCATION, SCIENCE AND TECHNOLOGY
IN COLLABORATION WITH
 PRESIDENT'S OFFICE REGIONAL ADMINISTRATION AND
 LOCAL GOVERNMENT

PROVISION OF PHYSICAL FACILITIES IN SECONDARY SCHOOLS
 FOR
 SECONDARY EDUCATION QUALITY IMPROVEMENT PROGRAM (SEQIP)

DRAWING TITLE **3 BEDROOM STAFF HOUSE**
 SIDE ELEVATIONS
 DRAWING NO. **SQP/ARC/3BR/05**

DRAWN BY LS
 CHECKED BY JR, RM, AL
 SCALE TO FIT
 MAY, 2021

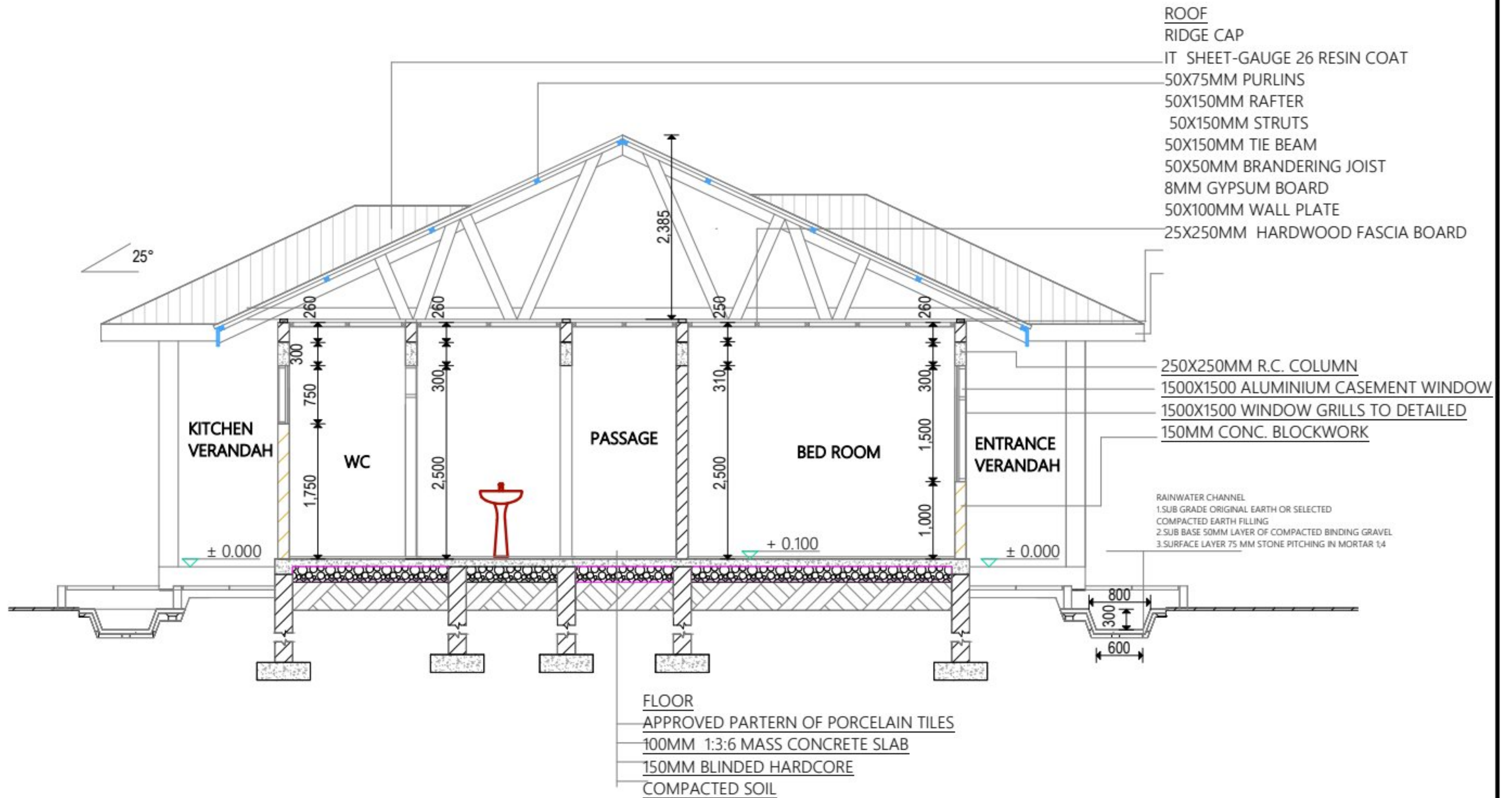


MINISTRY OF EDUCATION, SCIENCE AND TECHNOLOGY
 IN COLLABORATION WITH
 PRESIDENT'S OFFICE REGIONAL ADMINISTRATION AND
 LOCAL GOVERNMENT

PROVISION OF PHYSICAL FACILITIES IN SECONDARY SCHOOLS
 FOR
 SECONDARY EDUCATION QUALITY IMPROVEMENT PROGRAM (SEQIP)

DRAWING TITLE **3 BEDROOM STAFF HOUSE**
 ROOF PLAN
 DRAWING NO. **SQP/ARC/3BR/01**

DRAWN BY I.S.
 CHECKED BY J.R./M./A.L.
 SCALE TO FIT
 MAY, 2021

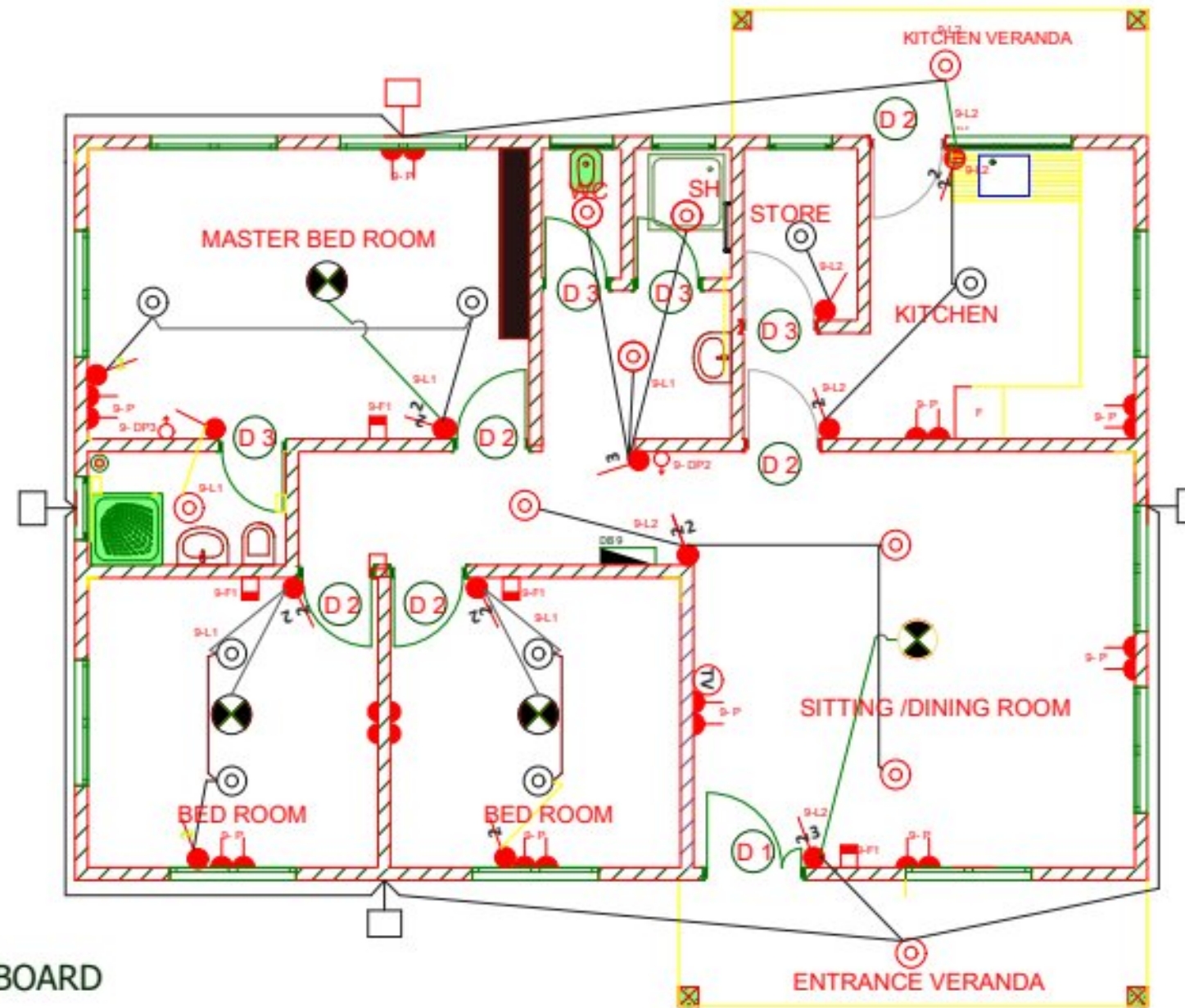


MINISTRY OF EDUCATION, SCIENCE AND TECHNOLOGY
 IN COLLABORATION WITH
 PRESIDENT'S OFFICE REGIONAL ADMINISTRATION AND
 LOCAL GOVERNMENT

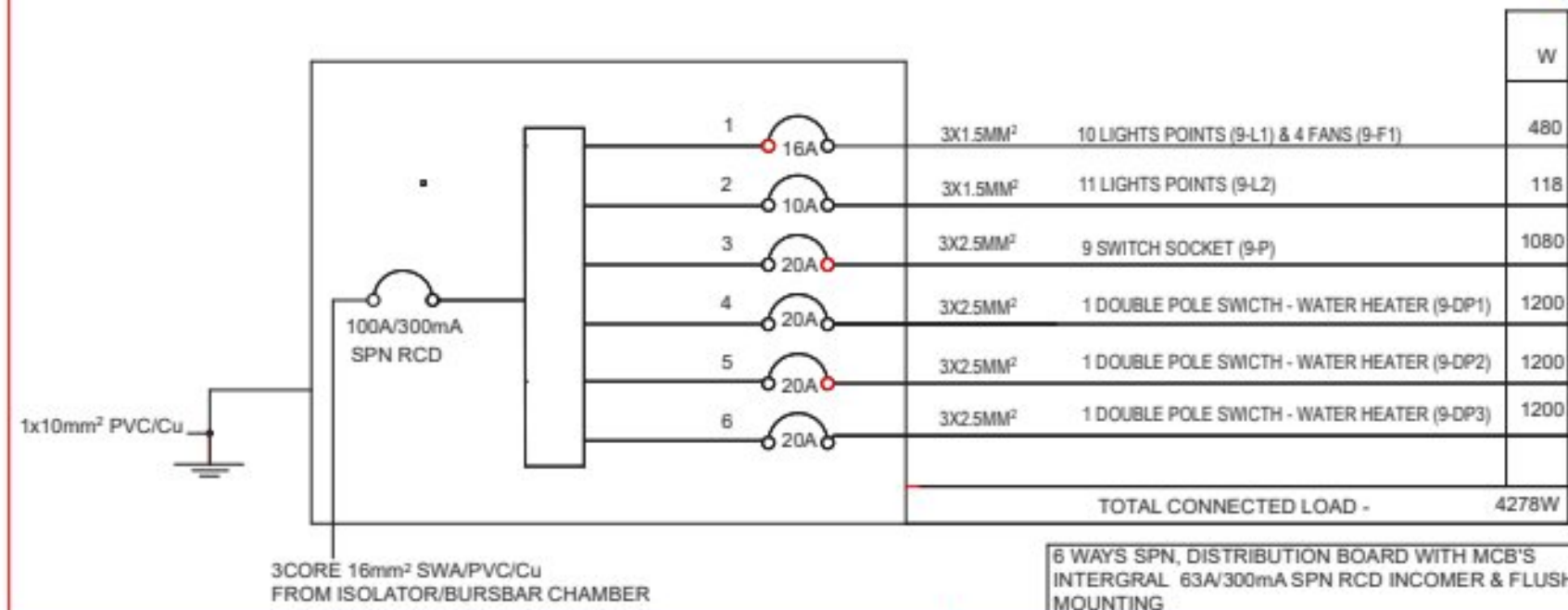
PROVISION OF PHYSICAL FACILITIES IN SECONDARY SCHOOLS
 FOR
 SECONDARY EDUCATION QUALITY IMPROVEMENT PROGRAM (SEQIP)

DRAWING TITLE **4 BEDROOM STAFF HOUSE**
 TYPICAL SECTION
 DRAWING NO. **SQP/ARC/4BR/03**

DRAWN BY I.S.
 CHECKED BY JR, RM, AL
 SCALE TO FIT
 MAY, 2021



6WAY SPN DISTRIBUTION BOARD



MINISTRY OF EDUCATION, SCIENCE AND TECHNOLOGY
IN COLLABORATION WITH
PRESIDENT'S OFFICE REGIONAL ADMINISTRATION AND
LOCAL GOVERNMENT

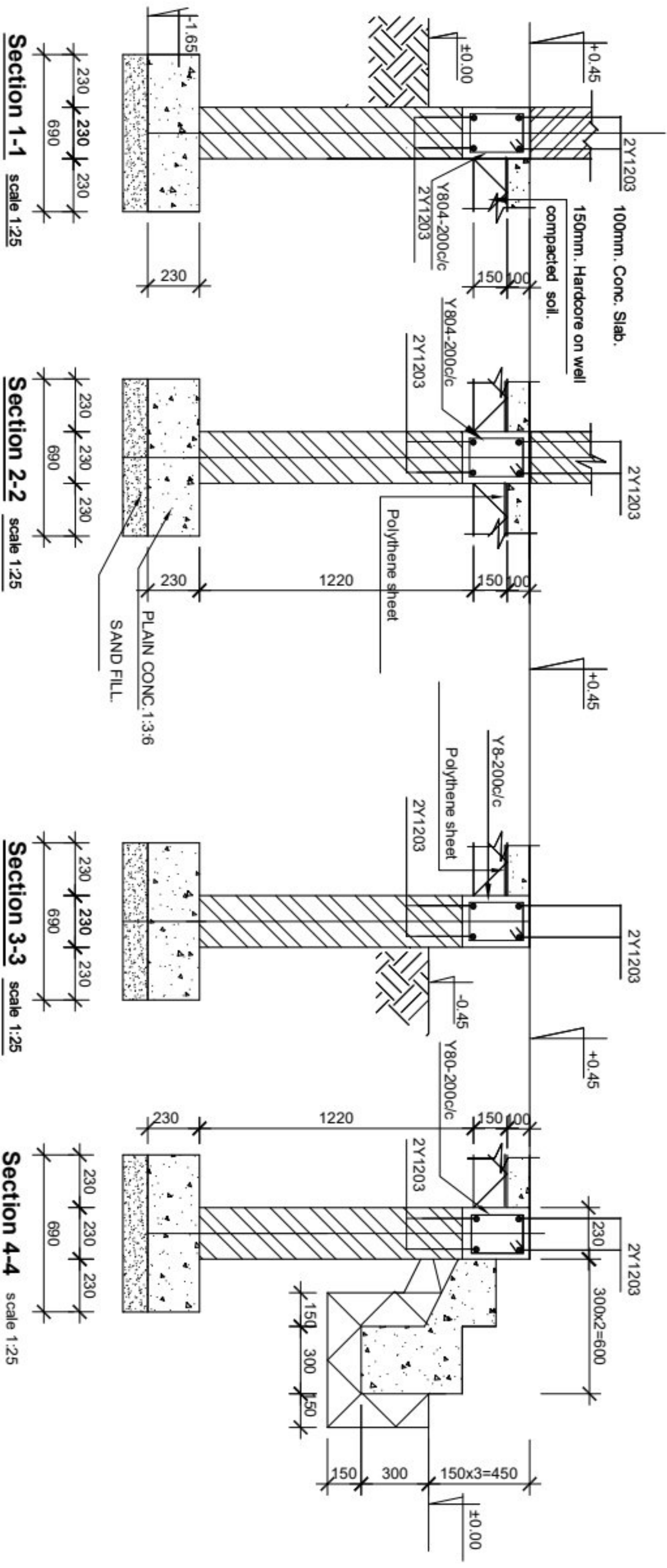
PROVISION OF PHYSICAL FACILITIES IN SECONDARY SCHOOLS
FOR
SECONDARY EDUCATION QUALITY IMPROVEMENT PROGRAM (SEQUIP)

DRAWING TITLE **3 BEDROOM STAFF HOUSE
FLOOR PLAN**
DRAWING NO. **SQP/ELECT/3BR/01**

DRAWN BY EEC
CHECKED BY K.M
SCALE TO FIT
MAY, 2021

NOTE:

1. All dimensions are in mm unless otherwise specified
2. All discrepancies shall be referred to the structural engineer
3. Reinforced concrete shall be of grade 20 with $f_{cu}=25N/mm^2$ at 28 days of age
4. Main reinforcements shall be high tensile steel with $f_y = 460N/mm^2$
5. Nominal cover to the reinforcements:
 - a) Foundation 50mm
 - b) Column 25mm
 - c) Beam 25mm
 - d) Slab 25mm
6. For walls: use compressive blocks 4.5Mpa
7. Minimum soil bearing capacity is $150kN/m^2$
8. Use well seasoned pressure impregnated soft wood for roof truss

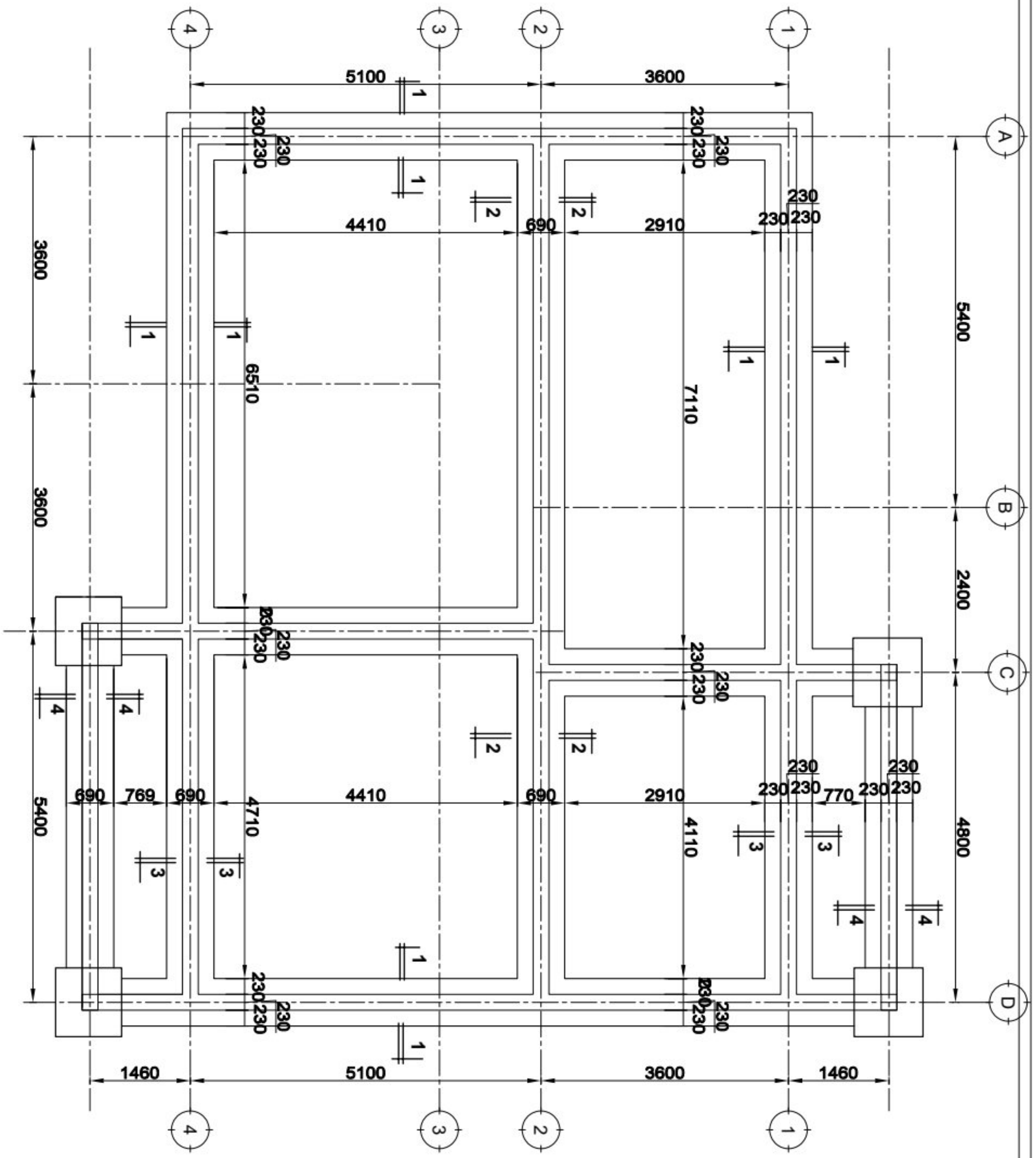


3BEDROOMS STAFF HOUSE - FOUNDATION DETAILS

DRAWING TITLE: 3-BEDROOMS STAFF HOUSE FOUNDATION DETAILS	
Designed by:	ENG. R.A.M
Drawn by:	ENG. R.A.M
Checked by:	ENG. A.M.A
Approved by:	
Date:	2021
Drawing No.	3BR/STR.102
Sheet:	

**MINISTRY OF EDUCATION,
SCIENCE AND TECHNOLOGY**
IN COLLABORATION WITH
**PRESIDENT'S OFFICE
REGIONAL ADMINISTRATION
LOCAL GOVERNMENT**

**PROPOSED STANDARD DRAWINGS
FOR SECONDARY EDUCATION
QUALITY IMPROVEMENT PROGRAM
(SEQUIP)**



3BEDROOMS STAFF HOUSE - FOUNDATION LAYOUT PLAN

NOTE:

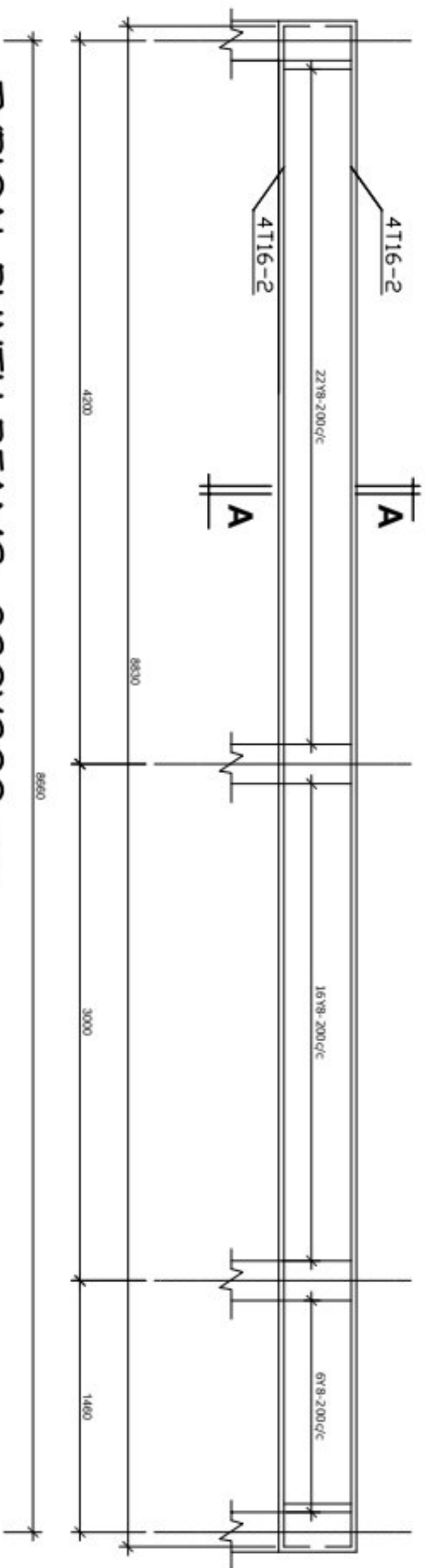
1. All dimensions are in mm unless otherwise specified
2. All discrepancies shall be referred to the structural engineer
3. Reinforced concrete shall be of grade 20 with $f_{cu}=25N/mm^2$ at 28 days of age
4. Main reinforcements shall be high tensile steel with $f_y = 460N/mm^2$
5. Nominal cover to the reinforcements:
 - a) Foundation 50mm
 - b) Column 25mm
 - c) Beam 25mm
 - d) Slab 25mm
6. For walls; use compressive blocks 4.5Mpa
7. Minimum soil bearing capacity is $150kN/m^2$,
8. Use well seasoned pressure impregnated soft wood for roof truss

MINISTRY OF EDUCATION,
SCIENCE AND TECHNOLOGY
IN COLLABORATION WITH
PRESIDENT'S OFFICE
REGIONAL ADMINISTRATION
LOCAL GOVERNMENT

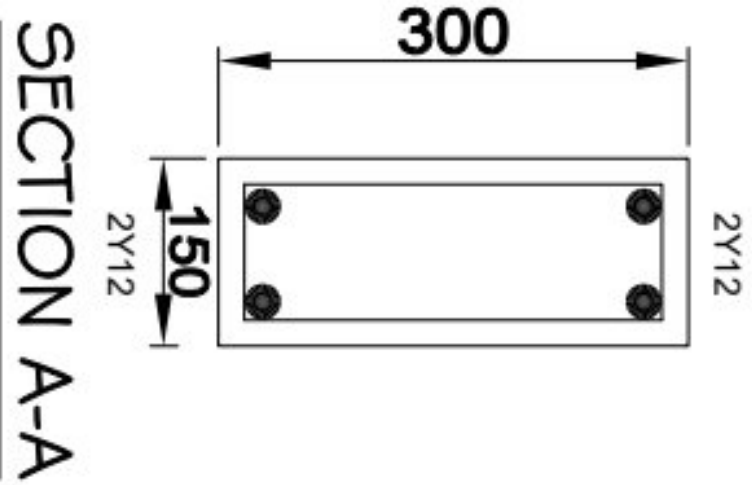
PROPOSED STANDARD DRAWINGS
FOR SECONDARY EDUCATION
QUALITY IMPROVEMENT PROGRAM
(SEQUIP)

DRAWING TITLE:
**3-BEDROOMS STAFF HOUSE
FOUNDATION PLAN**

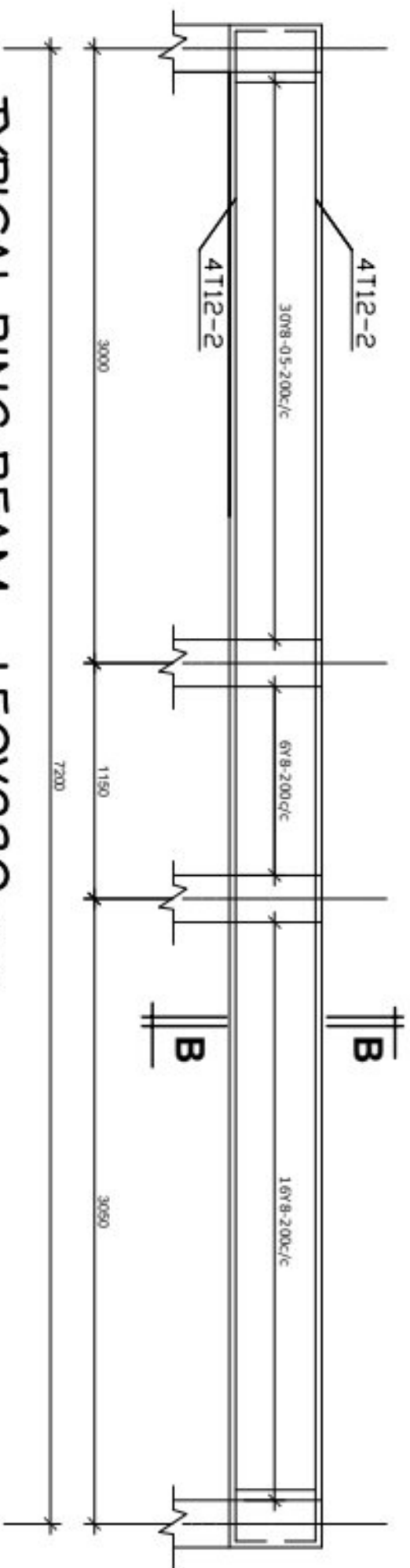
Designed by:	ENG. R.A.M
Drawn by:	ENG. R.A.M
Checked by:	ENG. A.M.A
Approved by:	
Date:	2021
Drawing No.	3BR/STR.101
Scale:	
Sheet:	



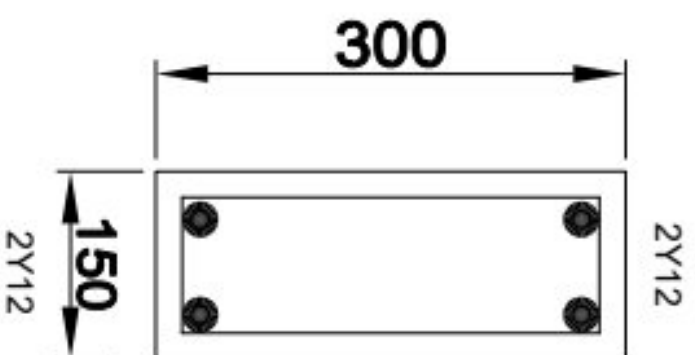
TYPICAL PLINTH BEAMS, 230X300 mm



SECTION A-A



TYPICAL RING BEAM, 150X230 mm



SECTION B-B

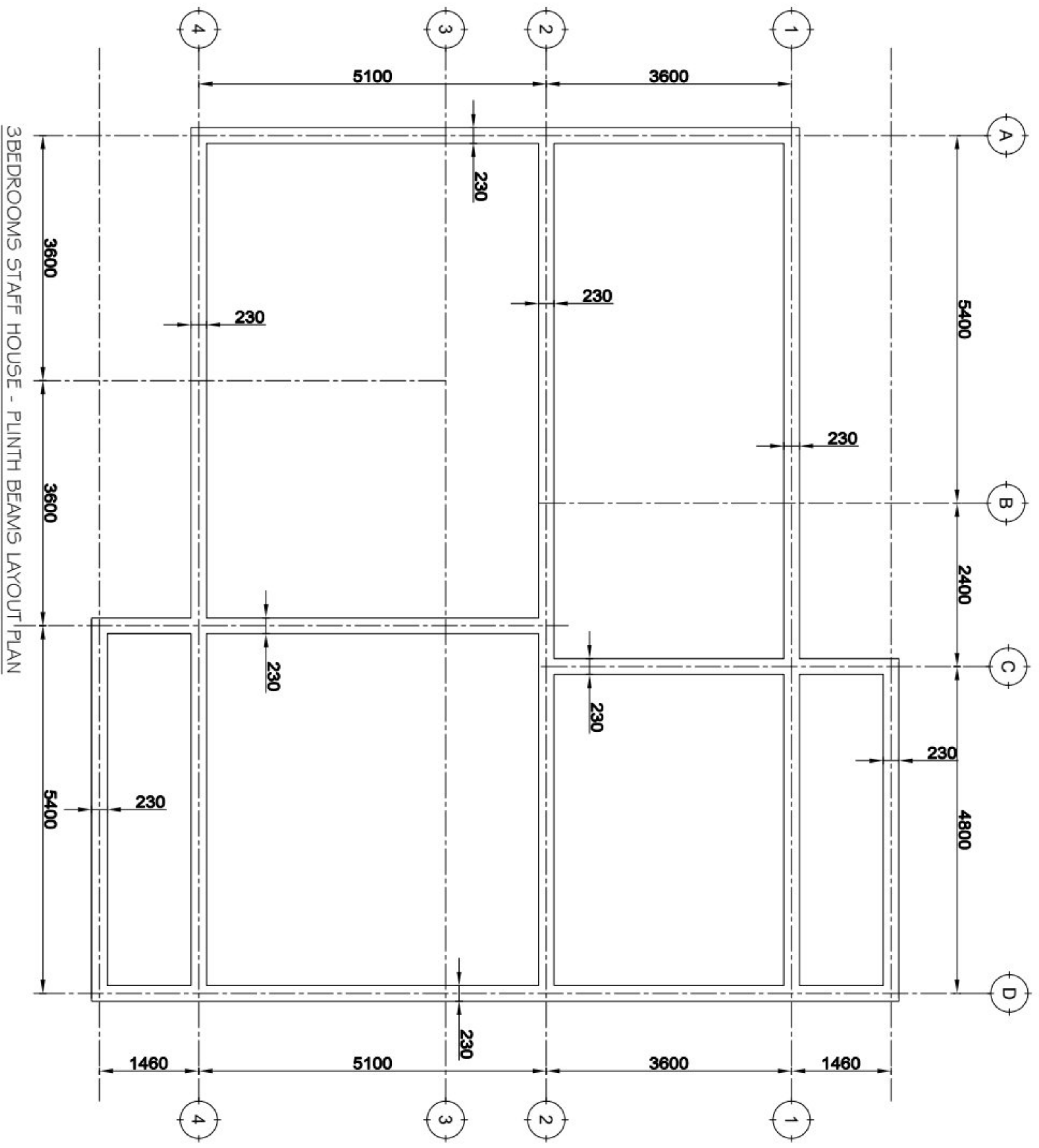
- NOTE:**
- All dimensions are in mm unless otherwise specified
 - All discrepancies shall be referred to the structural engineer
 - Reinforced concrete shall be of grade 20 with $f_{cu}=25N/mm^2$ at 28 days of age
 - Main reinforcements shall be high tensile steel with $f_y = 460N/mm^2$
 - Nominal cover to the reinforcements:
 - Foundation 50mm
 - Column 25mm
 - Beam 25mm
 - Slab 25mm
 - For walls; use compressive blocks 4.5Mpa
 - Minimum soil bearing capacity is $150kN/m^2$,
 - Use well seasoned pressure impregnated soft wood for roof truss

MINISTRY OF EDUCATION,
SCIENCE AND TECHNOLOGY
IN COLLABORATION WITH
PRESIDENT'S OFFICE
REGIONAL ADMINISTRATION
LOCAL GOVERNMENT

**PROPOSED STANDARD DRAWINGS
FOR SECONDARY EDUCATION
QUALITY IMPROVEMENT PROGRAM
(SEQUIP)**

DRAWING TITLE:
**4-BEDROOMS STAFF HOUSE
BEAMS DETAILS**

Designed by:	ENG. R.A.M
Drawn by:	ENG. R.A.M
Checked by:	ENG. A.M.A
Approved by:	
Date:	2021
Scale:	
Drawing No.	4BR/STR.104
Sheet:	



3BEDROOMS STAFF HOUSE - PLINTH BEAMS LAYOUT PLAN

NOTE:

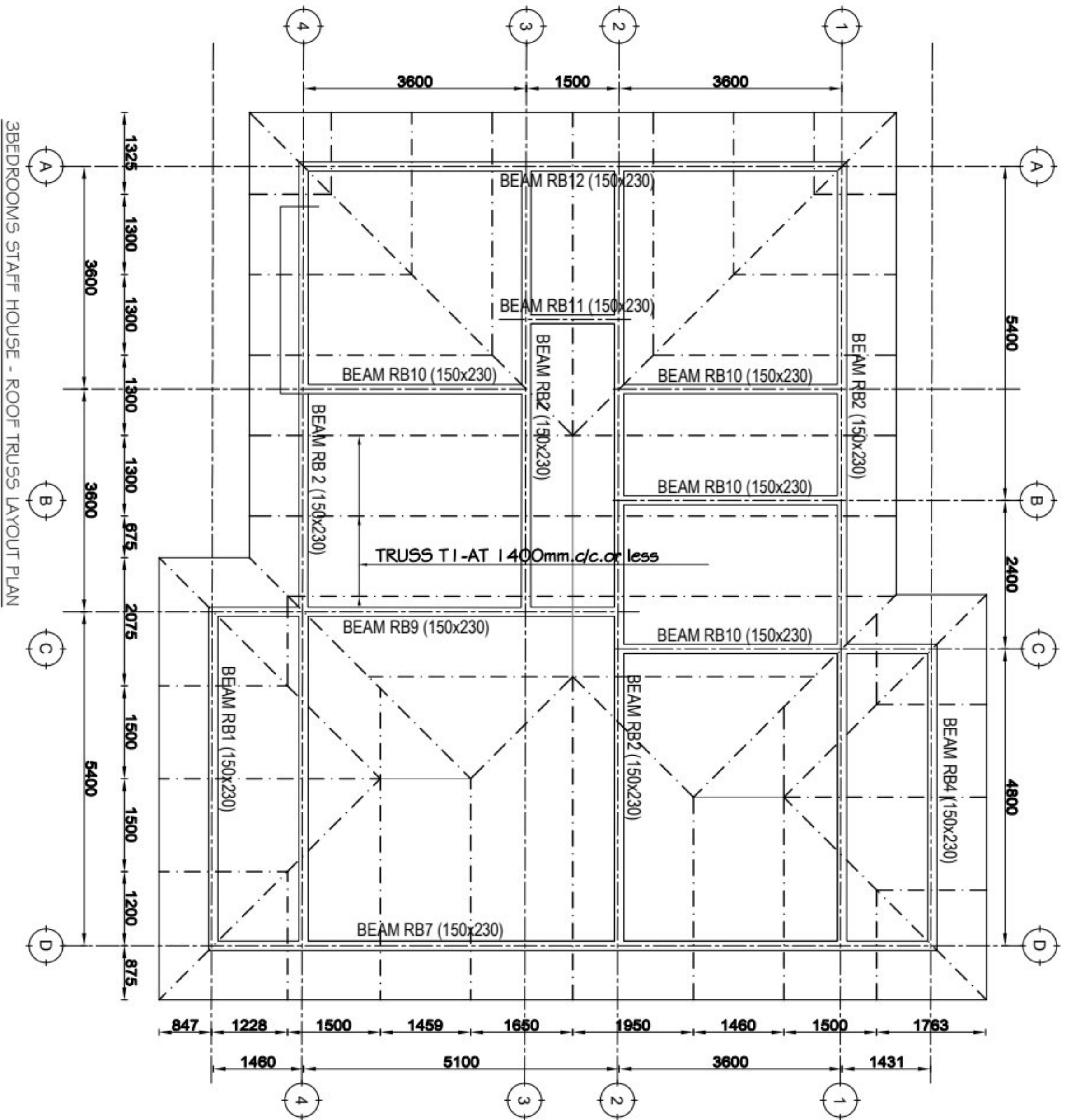
1. All dimensions are in mm unless otherwise specified
2. All discrepancies shall be referred to the structural engineer
3. Reinforced concrete shall be of grade 20 with $f_{cu}=25N/mm^2$ at 28 days of age
4. Main reinforcements shall be high tensile steel with $f_y = 460N/mm^2$
5. Nominal cover to the reinforcements:
 - a) Foundation 50mm
 - b) Column 25mm
 - c) Beam 25mm
 - d) Slab 25mm
6. For walls; use compressive blocks 4.5Mpa
7. Minimum soil bearing capacity is $150kN/m^2$,
8. Use well seasoned pressure impregnated soft wood for roof truss

MINISTRY OF EDUCATION,
SCIENCE AND TECHNOLOGY
IN COLLABORATION WITH
PRESIDENT'S OFFICE
REGIONAL ADMINISTRATION
LOCAL GOVERNMENT

PROPOSED STANDARD DRAWINGS
FOR SECONDARY EDUCATION
QUALITY IMPROVEMENT PROGRAM
(SEQUIP)

DRAWING TITLE:
**3-BEDROOMS STAFF HOUSE
PLINTH BEAMS LAYOUT PLAN**

Designed by:	ENG. R.A.M
Drawn by:	ENG. R.A.M
Checked by:	ENG. A.M.A
Approved by:	
Date:	2021
Scale:	
Drawing No.	3BR/STR.103
Sheet:	



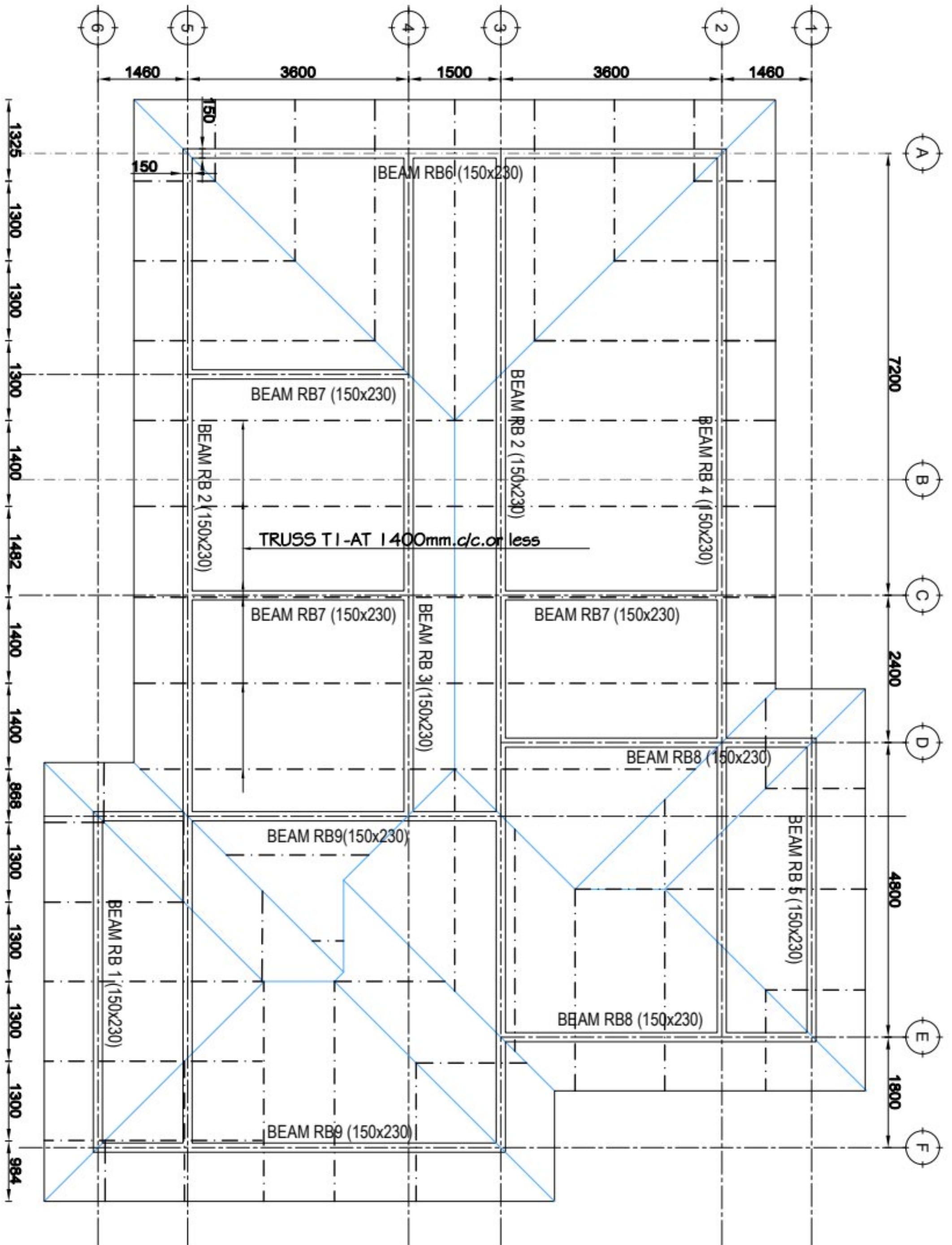
- NOTE:**
- All dimensions are in mm unless otherwise specified
 - All discrepancies shall be referred to the structural engineer
 - Reinforced concrete shall be of grade 20 with $f_{cu}=25N/mm^2$ at 28 days of age
 - Main reinforcements shall be high tensile steel with $f_y = 460N/mm^2$
 - Nominal cover to the reinforcements:
 - Foundation 50mm
 - Column 25mm
 - Beam 25mm
 - Slab 25mm
 - For walls; use compressive blocks 4.5Mpa
 - Minimum soil bearing capacity is $150kN/m^2$,
 - Use well seasoned pressure impregnated soft wood for roof truss

MINISTRY OF EDUCATION,
SCIENCE AND TECHNOLOGY
IN COLLABORATION WITH
PRESIDENT'S OFFICE
REGIONAL ADMINISTRATION
LOCAL GOVERNMENT

PROPOSED STANDARD
DRAWINGS FOR SECONDARY
EDUCATION QUALITY
IMPROVEMENT PROGRAM
(SEQUIP)

DRAWING TITLE:
3-BEDROOMS STAFF HOUSE
ROOF TRUSS LAYOUT PLAN

Designed by:	ENG. R.A.M
Drawn by:	ENG. R.A.M
Checked by:	ENG. A.M.A
Approved by:	
Date:	2021
Drawing No.	3BR/STR.106
Sheet:	



4BEDROOMS STAFF HOUSE - ROOF TRUSS LAYOUT PLAN

NOTE:

1. All dimensions are in mm unless otherwise specified
2. All discrepancies shall be referred to the structural engineer
3. Reinforced concrete shall be of grade 20 with $f_{cu}=25N/mm^2$ at 28 days of age
4. Main reinforcements shall be high tensile steel with $f_y = 460N/mm^2$
5. Nominal cover to the reinforcements:
 - a) Foundation 50mm
 - b) Column 25mm
 - c) Beam 25mm
 - d) Slab 25mm
6. For walls; use compressive blocks 4.5Mpa
7. Minimum soil bearing capacity is $150kN/m^2$,
8. Use well seasoned pressure impregnated soft wood for roof truss

MINISTRY OF EDUCATION,
SCIENCE AND TECHNOLOGY

IN COLLABORATION WITH

PRESIDENT'S OFFICE
REGIONAL ADMINISTRATION
LOCAL GOVERNMENT

**PROPOSED STANDARD
DRAWINGS FOR SECONDARY
EDUCATION QUALITY
IMPROVEMENT PROGRAM
(SEQUIP)**

**DRAWING TITLE:
4-BEDROOMS STAFF HOUSE
ROOF TRUSS LAYOUT PLAN**

Designed by:	ENG. R.A.M
Drawn by:	ENG. R.A.M
Checked by:	ENG. A.M.A
Approved by:	
Date:	2021
Drawing No.	4BR/STR.106
Sheet:	